

**IBM Analytics**

# **TRAINING CATALOGUE**

**Winter 2017**





# TABLE OF CONTENTS

About Us	6
Upcoming Events	7
Why Work with an IBM Premier Business Partner?	8
Training Initiative	9
IBM Business Intelligence (v10.2.2) Training Paths	10
Professional Author & Administrator	11
Business Author & Project Manager	12
Developer	13
IBM Cognos Business Intelligence (v10.2.2) Courses	14
B5A08G - Overview of IBM Cognos Business Intelligence (BI)	14
B5150G - IBM Cognos Query Studio: Build Ad Hoc Reports	14
B5151G - IBM Cognos Analysis Studio: Analyze Data	14
B5157G - IBM Cognos Metric Studio: Design Scorecards	15
B5A05G - Essentials for IBM Cognos BI: Supplement for Metadata Modelers	15
B5A19G - IBM Cognos BI Administration: Architecture and Logging	15
B5A52G - IBM Cognos Framework Manager: Design Metadata Models	16
B5A55G - IBM Cognos BI Administration	16
B5A58G - IBM Cognos Report Studio: Author Professional Reports Fundamentals	16
B5A59G - IBM Cognos Report Studio: Author Professional Reports - Advanced	17
B5A61G - IBM Cognos Report Studio: Author Professional Reports with Multidimensional Data	17
B5A63G - IBM Cognos Cube Designer: Design Dynamic Cubes	17
B5A70G - Essentials for IBM Cognos BI	18
B5280G - IBM Cognos Data Manager: Build Data Marts with Enterprise Data	18
B5A81G - IBM Cognos Workspace Advanced: Author Self-Service Reports	18
B5A82G - IBM Cognos Transformer: Design OLAP Models	19
B5A98G - IBM Cognos Report Studio: Author Active Reports	19
B5132G - IBM Cognos BI: Manage BI Projects	19
N0CCF - Cognos Connection	20
N0QSF - Cognos Query Studio	20
N0ASF - Cognos Analysis Studio	20
N0RSF - Cognos Report Studio Fundamentals	21
N0CWF - Cognos Workspace	21
N0CWF-A - Cognos Workspace Advanced - Relational and Dimensional Data with DMR Datasource	21
N0CWF-AM - Cognos Workspace Advanced with Cognos PowerCubes	22
N0CWF-ATM - Cognos Workspace Advanced - Multidimensional Data with TM1 Cubes	22
EM4BI - Esri Maps for IBM Cognos	22
IBM Cognos Business Intelligence (v10.2.2): Self-Paced Virtual Classes	23
B5129G - IBM Cognos Metric Studio: Manage Business Performance	23
B5143G - IBM Cognos Mobile Administration	23
B5169G - IBM Cognos Transformer: Create PowerCubes	23
B5A88G - IBM Cognos BI for Consumers	23
J2262G - IBM Cognos BI: Combined Administration, Architecture and Logging	24
P8125G - IBM Cognos Analysis for Microsoft Excel - Analyze BI Data	24
IBM Cognos Analytics (v11) Training Paths	25
Consumer & Author	26
Project Manager & Administrator	27
Developer	28
IBM Cognos Analytics (v11) Courses	29
B6008G - Overview of IBM Cognos Analytics	29
B6052G - IBM Cognos Framework Manager: Design Metadata Models	29
B6055G - IBM Cognos Analytics: Enterprise Administration	29
B6058G - IBM Cognos Analytics: Author Reports Fundamentals	30
B6059G - IBM Cognos Analytics: Author Reports Advanced	30
B6061G - IBM Cognos Analytics: Author Reports with Multidimensional Data	30
B6063G - IBM Cognos Cube Designer: Design Dynamic Cubes	31
B6070G - Essentials for IBM Cognos Analytics	31

# TABLE OF CONTENTS (CONTINUED)

B6098G - IBM Cognos Analytics: Author Active Reports	31
B6019G - IBM Cognos Analytics: Architecture and Logging	32
B6005G - Essentials for IBM Cognos Analytics: Supplement for Metadata Modelers	32
N0CAW - What's New in Cognos 11	32
N0CRF - IBM Cognos Analytics Report Authoring Fundamentals	33
IBM Cognos Analytics (v11): Self-Paced Virtual Classes	34
B5130G - IBM Cognos for Microsoft Office: Integrate with Microsoft Office	34
B5231G - IBM Cognos BI Event Studio: Create and Run Agents	34
B6025G - IBM Cognos Analytics: Introduction to Authoring	34
B6088G - IBM Cognos Analytics for Consumers	34
B6089G - IBM Cognos Analytics - Create Dashboards	35
B6090G - IBM Cognos Analytics - Create Data Modules	35
B6091G - IBM Cognos Analytics - Departmental Administration	35
IBM Cognos Performance Management Training Paths	36
IBM Cognos TM1/IBM Planning Analytics - Analyst & Administrator	37
IBM Cognos Disclosure Management - Administrator	38
IBM Cognos TM1/IBM Planning Analytics - Modeler	38
IBM Cognos Performance Management Courses	39
P8252G - IBM Planning Analytics/Cognos TM1: Design and Develop Models in Performance Modeler	39
P8255G - IBM Cognos TM1: Administer the Technical Environment	39
P8257G - IBM Planning Analytics/Cognos TM1: Analyze and Share Data	39
P8259G - IBM Planning Analytics/Cognos TM1: Create Scorecards	40
P8261G - IBM Planning Analytics/Cognos TM1: Design and Develop Models in Architect	40
N0PF0 - IBM Cognos TM1 Fundamentals	40
N0PR0 - IBM Cognos TM1 Reporting	41
N0PCR - IBM Cognos TM1 Cube Rules	41
N0TI0 - IBM Cognos TM1 Turbo Integrator	41
N0PBP - IBM Cognos TM1 Administration, Optimization & Additional Features	42
1K210G - IBM Cognos Disclosure Management (CDM)	42
IBM Cognos Performance Management: Self-Paced Virtual Classes	43
P8253G - IBM Cognos TM1: Interact with Data	43
P8254G - IBM Cognos TM1: Work with IBM Cognos Analysis for Microsoft Excel	43
IBM Information Management Training Paths	44
Data Integration Architect & Data Quality Architect	45
Data Integration Developer & Business Analyst/Data Steward	46
InfoSphere MDM Architect & InfoSphere MDM Business Specialist	47
InfoSphere MDM Technical Specialist & InfoSphere MDM Data Steward	48
Database Administration - DB2 BLU Acceleration	49
IBM Information Management Courses	50
CL213G - DB2 for LUW: Basic Administration for AIX	50
CL285G - Quick Basics of DB2 Administration for Windows	50
CL450G - Implementation and Use of DB2 BLU Acceleration	50
CL485G - DB2 for Linux, UNIX, and Windows Quickstart for Experienced Relational DBAs	51
KM204G - IBM InfoSphere DataStage Essentials	51
KM213G - IBM InfoSphere QualityStage Essentials	51
KM230G - Data Click v10 for BigInsights	52
KM404G - IBM InfoSphere Advanced DataStage: Parallel Framework	52
KM413G - IBM InfoSphere Advanced QualityStage	52
KM423G - IBM InfoSphere Advanced DataStage: Advanced Data Processing	53
KM510G - IBM InfoSphere Information Server Administrative Tasks	53
KM520G - IBM InfoSphere DataStage Engine Administration for Information Server	53
KM614G - IBM InfoSphere Information Governance Catalog: Building the Governance Catalog	54
KM624G - IBM InfoSphere Information Governance Catalog: Understanding Your Information Assets	54
KM650G - New Features in IBM InfoSphere Data Integration and Governance	54
KM803G - IBM Information Analyzer Essentials	55
ZZ520G - Using InfoSphere MDM Collaborative Edition	55

ZZ540G - Programming with InfoSphere MDM Collaborative Edition	55
ZZ610G - Data Model and Service Mapping for InfoSphere MDM Advanced Edition	56
ZZ670G - InfoSphere MDM Reference Data Management	56
ZZ720G - InfoSphere MDM Virtual Foundation	56
ZZ780G - InfoSphere MDM Algorithms	57
ZZ820G - InfoSphere MDM Architecture	57
ZZ840G - InfoSphere MDM Workbench	57
ZZ870G - InfoSphere MDM Application Toolkit	58
ZZ930G - InfoSphere MDM Physical Domains	58
ZZ981G - InfoSphere MDM Physical Module Algorithms	58
<b>IBM Information Management: Self-Paced Virtual Classes</b>	<b>59</b>
1Z801G - Introduction to InfoSphere Master Data Management	59
<b>IBM Advanced Analytics Training Paths</b>	<b>60</b>
IBM SPSS Statistics - New User & Reporting	61
IBM SPSS Statistics - Data Analyst	62
IBM SPSS Modeler - Analyst	63
<b>IBM Advanced Analytics Courses</b>	<b>64</b>
0A007G - Introduction to IBM SPSS Modeler and Data Mining	64
0A037G - Advanced Predictive Modeling Using IBM SPSS Modeler	64
0A047G - Clustering and Association Modeling Using IBM SPSS Modeler	64
0A057G - Advanced Data Preparation Using IBM SPSS Modeler	65
0A0G2G - Automated Data Mining with IBM SPSS Modeler	65
0A0U7G - Predictive Modeling for Categorical Targets Using IBM SPSS Modeler	65
0A0V7G - Predictive Modeling for Continuous Targets Using IBM SPSS Modeler	66
0A105G - Introduction to IBM SPSS Text Analytics	66
0G046G - Introduction to IBM SPSS Neural Networks	66
0G056G - Correspondence Analysis and Multidimensional Scaling with IBM SPSS Categories	67
0G063G - Advanced Techniques ANOVA	67
0G073G - Advanced Techniques Regression	67
0G093G - Advanced Statistical Analysis Using IBM SPSS Statistics	68
0G096G - Time Series Analysis and Forecasting with IBM SPSS Forecasting	68
0G170G - Presenting Data with IBM SPSS Custom Tables	68
0G2K9G - Introduction to IBM SPSS Decision Trees	69
0G406G - IBM SPSS Statistics Syntax I	69
0G416G - IBM SPSS Statistics Syntax II	69
0G504G - Introduction to IBM SPSS Statistics	70
0G514G - Introduction to Statistical Analysis using IBM SPSS Statistics	70
0G524G - Data Management and Manipulation with IBM SPSS Statistics	70
0L009G - IBM SPSS Statistics: Exploratory Data Analysis	71
0L019G - IBM SPSS Statistics: Advanced Topics in Regression and Discriminant Analysis	71
0L2M9G - IBM SPSS Statistics: Ordinal Regression, GLM and Hierarchical Modeling	71
<b>IBM Advanced Analytics: Self-Paced Virtual Classes</b>	<b>72</b>
0J022G - Introduction to IBM SPSS Monte Carlo Simulation	72
0J760G - Introduction to IBM SPSS Maps	72
0K166G - "Viz"-ualizing Your Data - On Demand Recording	72
0K437G - Integrating Functions, Procedures and Algorithms with IBM SPSS Statistics	72
<b>IBM Open Source &amp; Big Data Analytics Training Paths</b>	<b>73</b>
InfoSphere Streams & BigInsights	74
<b>IBM Open Source &amp; Big Data Analytics Courses</b>	<b>75</b>
DW601G - IBM BigInsights Overview	75
DW606G - IBM Open Platform with Apache Hadoop	75
DW613G - IBM BigInsights Foundation	75
DW633G - IBM BigInsights Big SQL	76
DW644G - IBM BigInsights BigSheets	76
DW653G - BigInsights Analytics for Programmers	76
DW654G - IBM BigInsights Text Analytics	77
DW724G - Programming for IBM InfoSphere Streams with SPL	77
DW732G - Administration of IBM Streams	77
<b>Frequently Asked Questions</b>	<b>78</b>

# WE ARE NEWCOMP ANALYTICS



**SOFTWARE  
LICENSING**



**SOFTWARE  
RENEWALS**



**TRAINING &  
EDUCATION**



**PROFESSIONAL  
SERVICES**



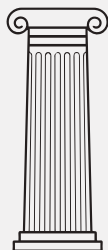
**EVENTS &  
WORKSHOPS**

## ABOUT US

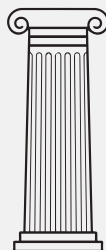
Newcomp Analytics is an IBM Premier Business Partner and Canada's leading solution provider of IBM Analytics. With a team of more than 50 professionals focused on financial performance, data analytics, predictive modeling and data mining, we have assisted over 400 clients in North America. As an end-to-end solution provider, Newcomp Analytics is committed to helping companies drive results and achieve business goals by opening the doorway to reliable real-time data, uncovering critical business insights, and transforming business processes.

## FOUR PILLARS OF EXPERTISE

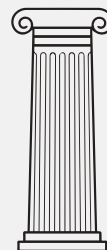
**PERFORMANCE  
MANAGEMENT**



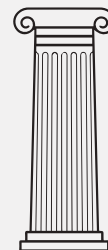
**BUSINESS  
INTELLIGENCE**



**INFORMATION  
MANAGEMENT**



**PREDICTIVE  
ANALYTICS**



Newcomp Analytics recognizes IBM as the innovator and leader in the analytics market. Over the last ten years, IBM and Newcomp's partnership has proven that the combination of IBM's innovative products and Newcomp's services have been key for successful project implementations.

# UPCOMING EVENTS

This season, our lineup of events cover a wide range of topics and industries that have been crafted to bring the most interesting insights in IBM Analytics to our attendees. We host our events across Canada or online in a webinar format for everyone to join. Be sure to visit our website at [newcomp.com/events](http://newcomp.com/events) for more event details and registration information. We welcome your feedback and recommendations at [info@newcomp.com](mailto:info@newcomp.com).



Steps and Considerations for Upgrading

New Product Releases and Features

Industry Specific Events

IBM Analytics Community Events

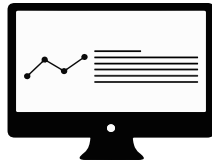
Watson Analytics for Social Media



Register at  
[newcomp.com/events](http://newcomp.com/events)

# WHY WORK WITH AN IBM PREMIER BUSINESS PARTNER?

When a company needs to make a change in their business processes, it's easy to choose IBM as the preferred vendor for analytics software. However, IBM Business Partners offer the specialized services you need to take your project one step further. Newcomp delivers a wide range of IBM products and services to our clients, acting as your trusted advisor and guiding you through every phase of your project. From helping you choose the right tools, to training your staff and maintaining your software, we are with you every step of the way. As an IBM Premier Business Partner, we have implemented, configured and supported hundreds of projects by providing:



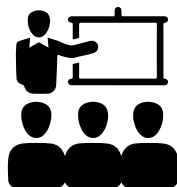
## SOFTWARE

We specialize in understanding your business needs and identifying the right tools to help you achieve your business goals. From purchasing to renewals, Newcomp is your single point of contact for all your software needs.



## IMPLEMENTATION

We bring our industry experts and best practices to implement your software solutions. Our services extend beyond project completion through ongoing support and training.



## TRAINING

Our internal training department offers IBM training courses in various formats including in-class, instructor-led-online and self-paced, with additional on-site and customization options for your business objectives.



## SUPPORT

We help protect your software investment by offering ongoing support to maximize the value of your software.



# TRAINING INITIATIVE

We believe that the most successful implementations result from educated and empowered users. Our educators are certified IBM professionals who bring real-life practical expertise to the classroom. Our dedicated training team will work with you and your team to understand your unique business needs and recommend the best training paths and formats to meet those needs.

This catalogue presents an overview of our most popular courses and locations. If you are looking for a course location that is not listed, feel free to reach out to us directly.

## AVAILABLE TRAINING FORMATS



**In-Class:** Newcomp's in-class facilities are located in Markham, Ottawa, Vancouver, Halifax, Calgary, Winnipeg, and Edmonton. Additional locations may be added based on demand.



**Instructor-Led Online (ILO):** ILO courses reduce travel time and costs as they can be taken from home or from the office. Students only need access to a computer, high-speed Internet, a phone and a headset.



**Self-Paced Virtual Classes:** Students have the flexibility to complete a course at their own pace over a 30-day time frame. *Please note that there is no live interaction with an instructor in this format.*

## PRIVATE TRAINING OPTIONS



**On-Site:** Instructors can deliver training to your entire team/user group at your location. This option reduces travel time, lowers costs and increases flexibility in scheduling. This format also enables students on the same team to interact with one another during the course, thereby increasing the value of the training.



**Customized:** Newcomp can also customize IBM courses based on user roles and training needs within an organization. This format enables students to learn new skills with their organization's data, thus optimizing the learning experience. Students receive the same experience as an in-class course, with a live instructor and hands-on practice with their environment.



**Educational Mentoring:** Educational mentoring is ideal for individuals who are looking for assistance with various topics that do not fit in a single course, or have specific questions about their organization's environment. Our instructor will work with students to cover requested topics, as well as answer ad hoc questions.

# IBM BUSINESS INTELLIGENCE (v10.2.2)

## AVAILABLE TRAINING FORMATS:



In-Class



Instructor-Led Online



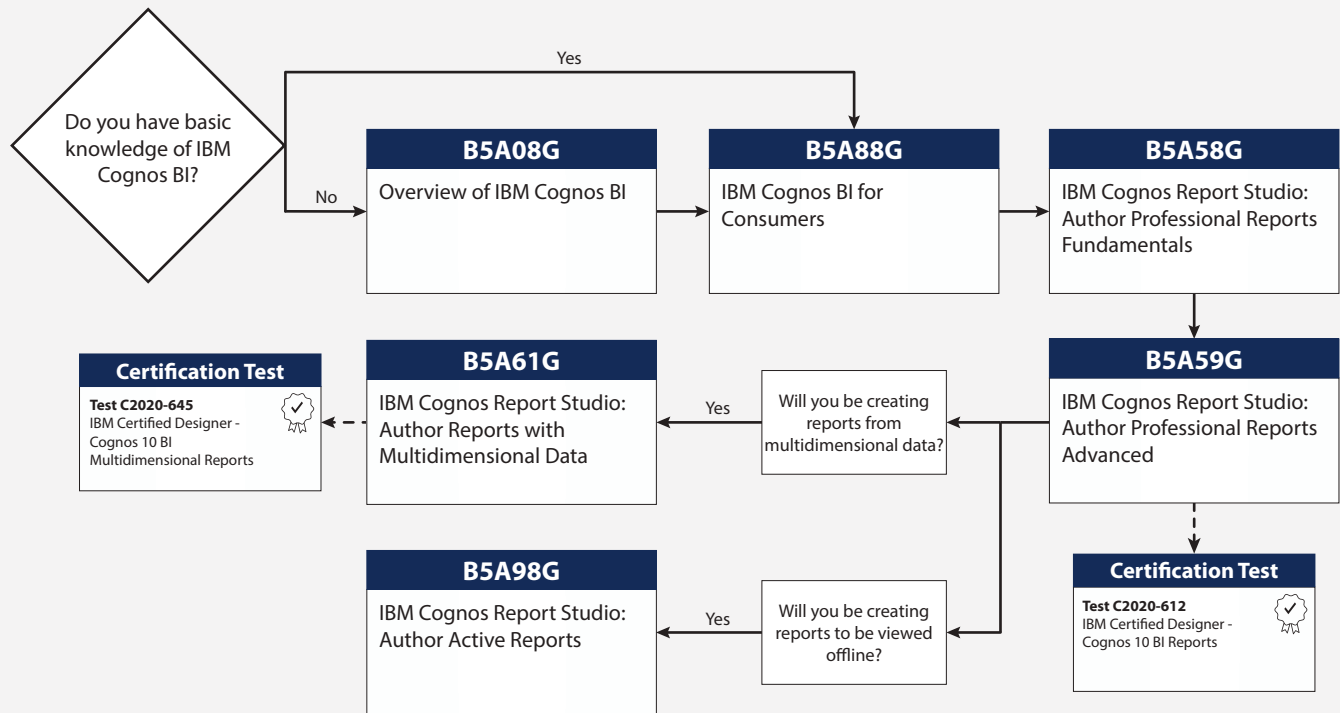
Self-Paced Virtual Classes



Customized

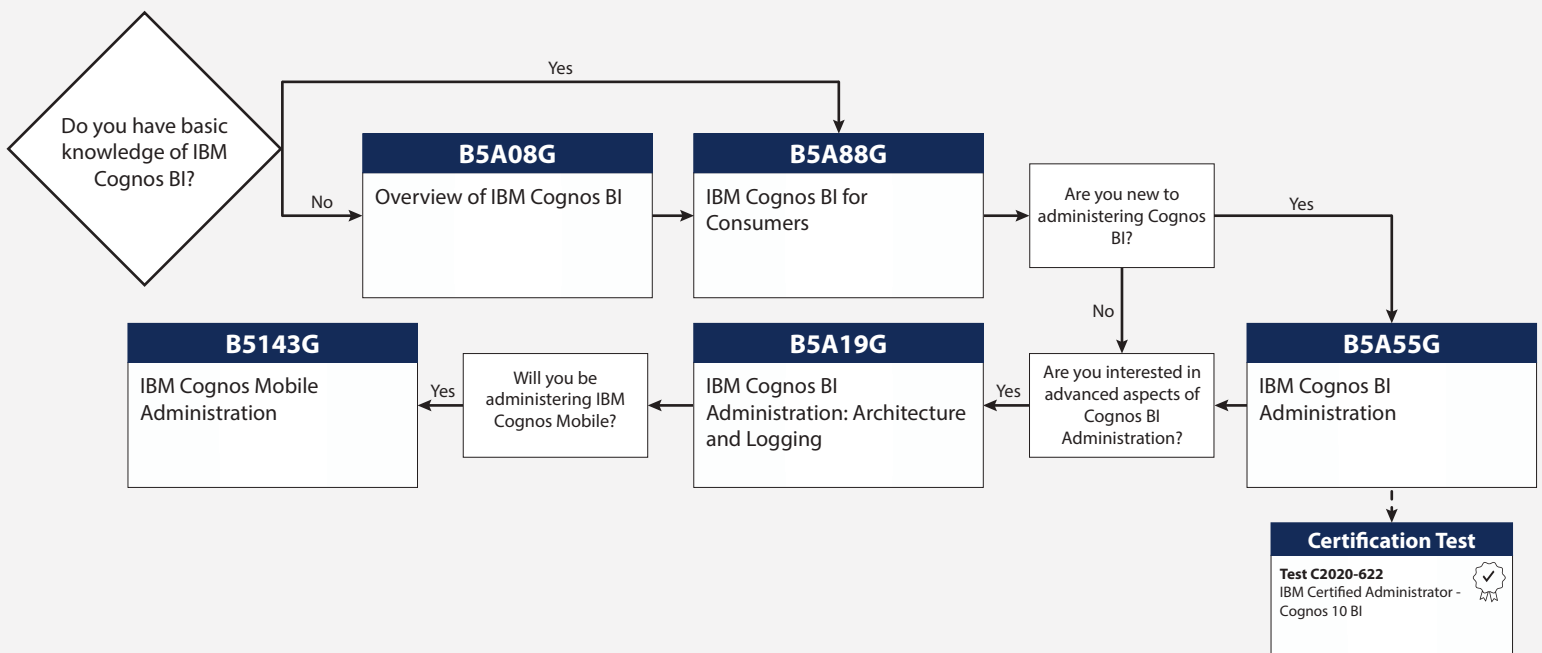
# PROFESSIONAL AUTHOR

Build Professional Reports & Analyze Data: As a professional author, you are responsible for creating reports for a variety of audiences. Use this journey to develop your skills to build simple and complex reports.



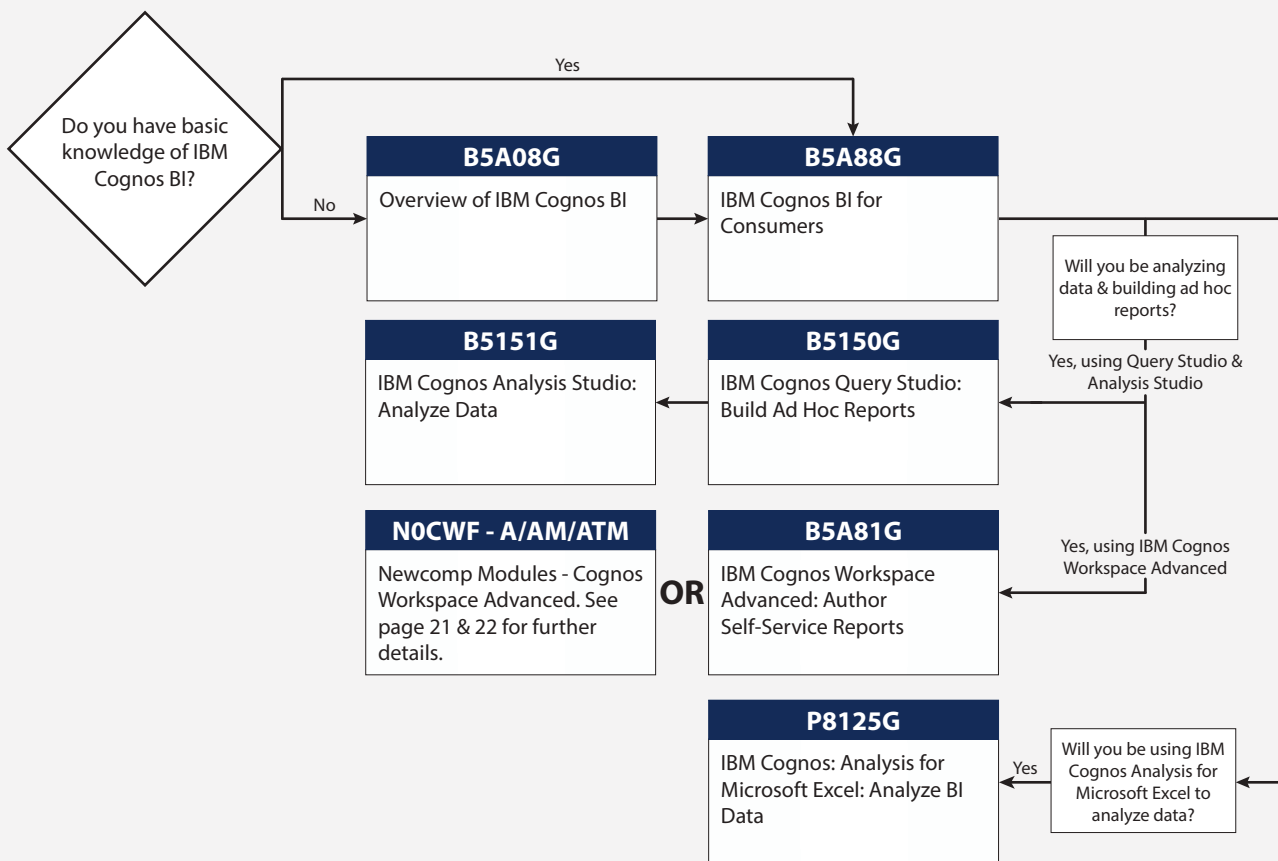
# ADMINISTRATOR

Administer the BI Platform: As an administrator, you are responsible for overseeing the technical aspects of your IBM Cognos BI enterprise. Use this journey to learn how to install and configure the IBM Cognos BI environment, as well as perform various server troubleshooting tasks and log analysis.



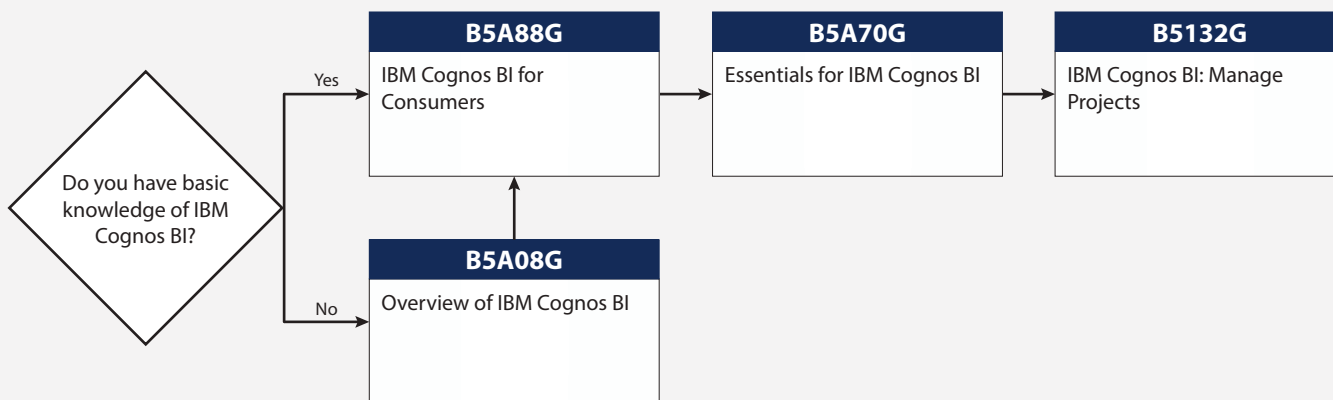
# BUSINESS AUTHOR

Build Ad-Hoc Reports & Analyze Data: As a business author, you are responsible for creating ad-hoc reports and analyzing your data. Use this journey to develop your skills to be self-sufficient in your enterprise BI environment.



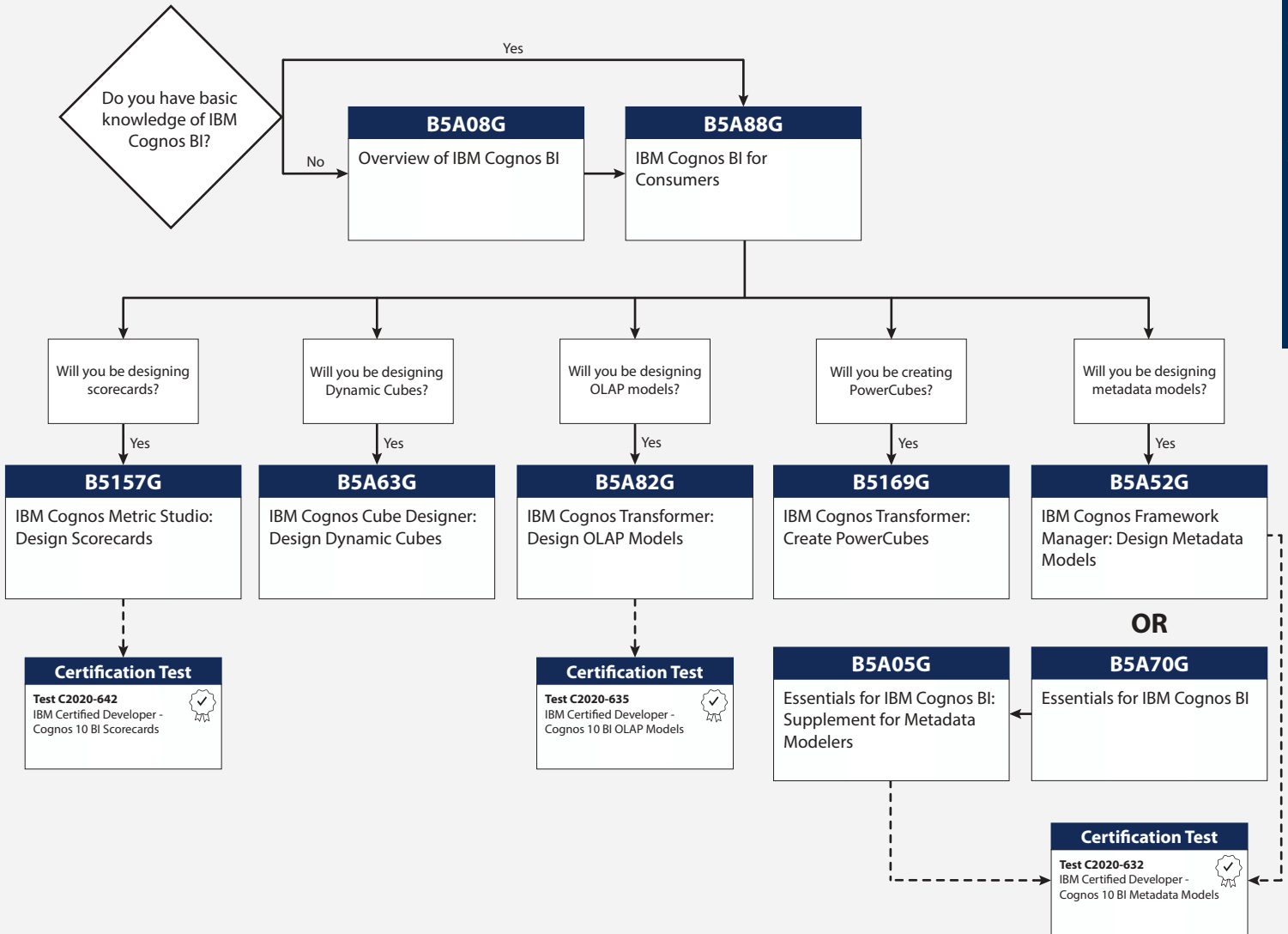
# PROJECT MANAGER

Manage Business Projects: As a project manager, you are responsible for managing the BI project from the initiation phase to project completion. Use this journey to learn the process of creating a BI solution, the underlying architecture and how the IBM implementation methodology complements top project management methodologies.



# DEVELOPER

Build Data Models, Cubes & Scorecards: As a developer, you are responsible for designing metadata models that enable your organization to build reports and analyze their data. Use this journey to develop your skills in building relational or multidimensional data models.



## B5A08G

### Overview of IBM Cognos Business Intelligence (BI)

This course provides a high-level overview of the suite of products available under IBM Cognos BI and their underlying architectures. Students will examine each IBM Cognos BI component related to the comprehensive Smarter Analytics solution, and have access to a range of other resources with additional information on each product.

**Audience:**

- Consumers, business authors, professional report authors, developers, administrators, modelers, and project managers

**Prerequisites:**

- An understanding of your organization's business intelligence process and reporting needs
- Experience using a web browser and familiarity with Windows OS

### Upcoming Sessions

Feb, 10, 2017- Markham/Online

Mar, 10, 2017- Markham/Online

Mar, 10, 2017- Vancouver

Apr, 7, 2017- Winnipeg

Apr, 7, 2017- Markham/Online

May, 12, 2017- Ottawa/Online

## B5150G

### IBM Cognos Query Studio: Build Ad Hoc Reports

This course teaches business authors how to create, modify and organize ad hoc reports. Students will also learn how to use various reporting capabilities including templates to create reports, data visualization, and administrative tasks such as scheduling and delivering reports in different formats (i.e. HTML, PDF, Excel).

**Audience:**

- Business authors

**Prerequisites:**

- Experience using a web browser and familiarity with Windows OS
- B5A88G - IBM Cognos BI for Consumers (eLearning) (page 23) *(recommended)*

### Upcoming Sessions

Feb, 7, 2017- Markham/Online

Mar, 30, 2017- Online

Apr, 24, 2017- Ottawa/Online

Apr, 24, 2017- Vancouver

May, 29, 2017- Markham/Online

May, 29, 2017- Winnipeg

## B5151G

### IBM Cognos Analysis Studio: Analyze Data

This course teaches business authors how to navigate and analyze large volumes of data in IBM Cognos Analysis Studio and how to manage reports through IBM Cognos Connection. Students will learn how techniques such as ranking, filtering, asymmetrical crosstabs, and graphing help discover trends, and identify opportunities to allow smarter business decisions.

**Audience:**

- Business authors

**Prerequisites:**

- Experience using a web browser and familiarity with Windows OS
- B5150G - IBM Cognos Query Studio: Build Ad Hoc Reports (page 14) *(recommended)*

### Upcoming Sessions

Feb, 8, 2017- Markham/Online

Mar, 31, 2017- Online

Apr, 25, 2017- Ottawa/Online

Apr, 25, 2017- Vancouver

May, 30, 2017- Markham/Online

May, 30, 2017- Winnipeg

## B5157G

### IBM Cognos Metric Studio: Design Scorecards

Developers will learn how to plan, create, set up, and maintain scorecard applications using IBM Cognos Metric Studio. Students will learn to load data from supported data sources using IBM Cognos Metric Designer, as well as alternative methods such as flat files and SQL scripts. Students will also learn how to secure objects within the scorecard application and the application itself.

**Audience:**

- Developers

**Prerequisites:**

- Knowledge of Performance Management concepts, scorecarding methodologies and applications
- Basic knowledge of IBM Cognos BI, IBM Cognos Connection and Relational Database Management System (RDBMS) (e.g. SQL Server)
- B5A88G - IBM Cognos BI for Consumers (eLearning) (page 23) *(recommended)*

#### Upcoming Sessions

- Mar, 22-24, 2017- Markham/Online
- Mar, 22-24, 2017- Vancouver
- May, 8-10, 2017- Ottawa/Online
- May, 8-10, 2017- Winnipeg
- Jun, 28-30, 2017- Markham/Online
- Jun, 28-30, 2017- Ottawa

## B5A05G

### Essentials for IBM Cognos BI: Supplement for Metadata Modelers

This course outlines the remainder of the metadata modeling concepts found in the IBM Cognos Framework Manager: Design Metadata Models (v10.2.2) offering. This course will provide a complete overview of the metadata modeling process, from initial project creation, to publishing metadata to the web.

**Audience:**

- Developers, modelers, and application developers

**Prerequisites:**

- Knowledge of common industry-standard data structures and design
- Experience with SQL, gathering requirements and analyzing data
- B5A70G - Essentials for IBM Cognos BI (page 18) or equivalent experience

#### Upcoming Sessions

- Jan, 16-17, 2017- Ottawa/Online
- Feb, 13-14, 2017- Online
- Apr, 3-4, 2017- Markham/Online
- Apr, 3-4, 2017- Vancouver
- May, 8-9, 2017- Winnipeg
- May, 8-9, 2017- Markham/Online

## B5A19G

### IBM Cognos BI Administration: Architecture and Logging

This advanced course teaches administrators how to identify components of the IBM Cognos BI architecture, and how to troubleshoot issues using various tools and techniques. Administrators will examine how these components interact with Java, and will also explore how logging can assist with troubleshooting issues.

**Audience:**

- Administrators responsible for the IBM Cognos 10.2.2 BI environment

**Prerequisites:**

- B5A55G - IBM Cognos BI Administration (page 16) or equivalent experience
- B5A88G - IBM Cognos BI for Consumers (eLearning) (page 23) *(recommended)*

#### Upcoming Sessions

- Jan, 26-27, 2017- Ottawa/Online
- Mar, 2-3, 2017- Markham/Online
- Mar, 2-3, 2017- Calgary
- Mar, 23-24, 2017- Vancouver
- Apr, 6-7, 2017- Markham/Online
- Apr, 6-7, 2017- Ottawa

**B5A52G**   

## IBM Cognos Framework Manager: Design Metadata Models

Developers will be introduced to advanced knowledge of metadata modeling concepts, including how to model metadata for predictive reporting and how to analyze results using Framework Manager. This course also covers the metadata modeling process, including initial project creation, publishing metadata to the web, and enabling end-users to author reports and analyze data.

**Audience:**

- Developers

**Prerequisites:**

- Knowledge of common industry standard data structures and design
- Experience with SQL and gathering requirements and analyzing data
- B5A88G - IBM Cognos BI for Consumers (eLearning) (page 23) *(recommended)*

### Upcoming Sessions

Jan, 16-20, 2017- Markham/Online

Jan, 16-20, 2017- Vancouver

Feb 27-Mar 3, 2017- Ottawa/Online

Feb 27-Mar 3, 2017- Winnipeg

Mar, 13-17, 2017- Markham/Online

Apr, 17-21, 2017- Ottawa/Online

**B5A55G**   

## IBM Cognos BI Administration

This course teaches administrators the fundamental tasks of installing and configuring IBM Cognos BI and administering servers and content in the environment. Administrators will implement security, manage the server components, monitor and schedule tasks, create data sources, as well as manage and deploy content in IBM Cognos Connection and Administration.

**Audience:**

- Administrators

**Prerequisites:**

- Knowledge of web application server architectures *(recommended)*
- Knowledge of security systems administration *(recommended)*
- B5A88G - IBM Cognos BI for Consumers (eLearning) (page 23) *(recommended)*

### Upcoming Sessions

Jan, 23-25, 2017- Ottawa/Online

Feb, 27-29, 2017- Markham/Online

Feb, 27-29, 2017- Calgary

Mar, 20-22, 2017- Vancouver

Apr, 3-5, 2017- Markham/Online

Apr, 3-5, 2017- Ottawa

**B5A58G**   

## IBM Cognos Report Studio: Author Professional Reports Fundamentals

Professional report authors will learn report-building techniques using relational data models, including methods to enhance, customize, and manage professional reports.

**Audience:**

- Professional report authors

**Prerequisites:**

- B5A88G - IBM Cognos BI for Consumers (eLearning) (page 23) or equivalent experience

### Upcoming Sessions

Jan, 9-11, 2017- Markham/Online

Feb, 13-15, 2017- Ottawa/Online

Feb, 13-15, 2017- Calgary

Mar, 6-8, 2017- Markham/Online

Mar, 20-22, 2017- Vancouver/Online

Apr, 24-26, 2017- Markham/Online



## B5A59G

### IBM Cognos Report Studio: Author Professional Reports - Advanced

This course will expose professional report authors to advanced report-building techniques using relational data models, including ways to enhance, customize, and manage professional reports.

**Audience:**

- Professional report authors using relational data sources to build reports

**Prerequisites:**

- Basic knowledge of SQL, XML (*recommended*)
- B5A58G - IBM Cognos Report Studio: Author Professional Reports Fundamentals (page 16) or equivalent experience

#### Upcoming Sessions

- Jan, 12-13, 2017- Markham/Online
- Feb, 16-17, 2017- Ottawa/Online
- Feb, 16-17, 2017- Calgary
- Mar, 9-10, 2017- Markham/Online
- Mar, 23-24, 2017- Vancouver/Online
- Apr, 27-28, 2017- Markham/Online

## B5A61G

### IBM Cognos Report Studio: Author Professional Reports with Multidimensional Data

This course teaches professional report authors how to apply dimensional techniques to reports. Students will learn how to author reports that navigate and manipulate dimensional data structures, using specific dimensional functions and features in IBM Cognos Report Studio.

**Audience:**

- Professional report authors using dimensional data sources to build reports

**Prerequisites:**

- B5A58G - IBM Cognos Report Studio: Author Professional Reports Fundamentals (page 16) or equivalent experience

#### Upcoming Sessions

- Feb, 6-7, 2017- Markham/Online
- Mar, 8-9, 2017- Ottawa/Online
- Mar, 8-9, 2017- Calgary
- May, 18-19, 2017- Ottawa/Online
- Jun, 22-23, 2017- Markham/Online
- Jun, 22-23, 2017- Vancouver

## B5A63G

### IBM Cognos Cube Designer: Design Dynamic Cubes

This intermediate course provides data modelers with introductory to advanced knowledge of how to model metadata for predictable reporting and results analysis using IBM Cognos Cube Designer. Students will learn the full scope of the metadata modeling process, from initial project creation and publishing dynamic cubes, to enabling end-users to easily author reports and analyze data.

**Audience:**

- Data modelers

**Prerequisites:**

- Knowledge of dimensional modeling and design
- Experience using IBM Cognos Connection and Administration
- B5A88G - IBM Cognos BI for Consumers (eLearning) (page 23) (*recommended*)

#### Upcoming Sessions

- Feb, 23-24, 2017- Markham/Online
- Feb, 23-24, 2017- Ottawa
- Mar, 16-17, 2017- Markham/Online
- Mar, 16-17, 2017- Vancouver
- Apr, 10-11, 2017- Ottawa/Online
- May, 23-24, 2017- Markham/Online

**B5A70G**  

## Essentials for IBM Cognos BI

This accelerated course offering is designed to help project team members gain a broad understanding of an IBM Cognos BI implementation process, covering three essential topic areas: modeling, report authoring, and administration. Students will be guided to more in-depth training offerings and paths leading to certification, with an option to purchase additional eLearning modules. *Please contact the Newcomp Training Team for details regarding the additional eLearning modules.*

**Audience:**

- Core project team members: project managers, technical analysts, and developers

**Prerequisites:**

- Experience using a web browser and familiarity with Windows OS
- B5A88G - IBM Cognos BI for Consumers (eLearning) (page 23) *(recommended)*

### Upcoming Sessions

- Jan, 9-13, 2017- Ottawa/Online
- Feb, 6-10, 2017- Markham/Online
- Feb, 6-10, 2017- Ottawa
- Feb, 13-17, 2017- Halifax/Online
- Mar, 27-31, 2017- Markham/Online
- Mar, 27-31, 2017- Ottawa

**B5280G**   

## IBM Cognos Data Manager: Build Data Marts with Enterprise Data

This course teaches developers how to move, merge, consolidate, and transform data from a range of data sources to build and maintain data marts. Students will create a catalog, add connections to data sources and targets, and use the dimensional framework to deliver fact and dimension data to a data mart. Students will also learn how to automate common functionality and handle unbalanced hierarchical structures.

**Audience:**

- Developers

**Prerequisites:**

- Knowledge of database and dimensional analysis concepts, working knowledge of SQL

### Upcoming Sessions

- Feb, 20-24, 2017- Ottawa/Online
- Apr, 3-7, 2017- Markham/Online
- May, 22-26, 2017- Markham/Online
- May, 22-26, 2017- Vancouver
- Jun, 26-30, 2017- Online
- June, 26-30, 2017- Calgary

**B5A81G**   

## IBM Cognos Workspace Advanced: Author Self-Service Reports

This course teaches business authors how to use IBM Cognos Workspace Advanced to create ad hoc reports with relational and dimensional data.

**Audience:**

- Business authors looking to build ad hoc reports

**Prerequisites:**

- B5A88G - IBM Cognos BI for Consumers (eLearning) (page 23) *(recommended)*

### Upcoming Sessions

- Jan, 30-31, 2017- Ottawa/Online
- Jan, 30-31, 2017- Vancouver
- Feb, 21-22, 2017- Markham/Online
- Feb, 21-22, 2017- Ottawa
- Mar, 6-7, 2017- Ottawa/Online
- Apr, 12-13, 2017- Markham/Online

## B5A82G

### IBM Cognos Transformer: Design OLAP Models

This course provides an overview of Online Analytical Processing (OLAP) modeling concepts using Transformer. Students will learn how to design, build, and maintain IBM Cognos PowerCubes for use in IBM Cognos BI so that end-users can easily analyze data.

**Audience:**

- Developers looking to design OLAP models for use in IBM Cognos BI

**Prerequisites:**

- Understanding of business needs for ad hoc queries and analysis
- Experience gathering requirements and analyzing data
- B5A58G - IBM Cognos Report Studio: Author Professional Reports Fundamentals (page 16) or equivalent experience (*recommended*)
- B5A88G - IBM Cognos BI for Consumers (eLearning) (page 23) or equivalent experience

#### Upcoming Sessions

- Jan, 16-19, 2017- Markham/Online
- Feb, 14-17, 2017- Markham/Online
- Feb, 14-17, 2017- Vancouver
- Apr, 3-6, 2017- Ottawa/Online
- Apr, 10-13, 2017- Markham/Online
- May, 8-11, 2017- Markham/Online

## B5A98G

### IBM Cognos Report Studio: Author Active Reports

This course covers how to incorporate interactivity and disconnected functionality to reports using active report controls. Students will learn how to author reports with interactive content, as well as reports optimized to work on mobile devices or in disconnected environments.

**Audience:**

- Professional report authors looking to create interactive and disconnected reports

**Prerequisites**

- Basic understanding of IBM Cognos Report Studio and report authoring
- B5A58G - IBM Cognos Report Studio: Author Professional Reports Fundamentals (Page 16) (*recommended*)

#### Upcoming Sessions

- Jan, 20, 2017- Ottawa/Online
- Feb, 10, 2017- Markham/Online
- Mar, 31, 2017- Vancouver/Online
- Apr, 21, 2017- Markham/Online
- May, 26, 2017- Ottawa/Online
- Jun, 26, 2017- Markham/Online

## B5132G

### IBM Cognos BI: Manage BI Projects

This course introduces students to the IBM Cognos Solutions Implementation Methodology (IBM CSIM), the elements of IBM Cognos 10 BI, and the underlying architecture. Students will examine the process of creating an IBM Cognos 10 BI solution, discuss how IBM Cognos 10 BI relates to the other parts of IBM Cognos 10, and review how the IBM Cognos 10 implementation methodology complements top project management methodologies.

**Audience:**

- Project managers and implementation team stakeholders

**Prerequisites:**

- Knowledge of Performance Management (PM) concepts
- Familiarity using the Windows OS, and experience using a web browser
- Basic knowledge of IBM Cognos 10 BI and IBM Cognos Connection (*recommended*)

#### Upcoming Sessions

- Feb, 27-28, 2017- Markham/Online
- Feb, 27-28, 2017- Ottawa
- Apr, 10-11, 2017- Markham/Online
- Apr, 10-11, 2017- Vancouver
- May, 22-23, 2017- Winnipeg/Online
- Jun, 19-20, 2017- Markham/Online

**NOCCF**   

## Cognos Connection

This course introduces students to the basics of IBM Cognos Connection: the portal to your enterprise's IBM Cognos BI content and data. Students will learn how to navigate the public and private areas of IBM Cognos Connection and set preferences, as well as how to run, personalize, and schedule existing reports. This course also introduces pages, dashboard, and portal tabs.

**Audience:**

- All Cognos BI users

**Prerequisites:**

- None

### Upcoming Sessions

No publicly scheduled dates-

this course is recommended to be

taken as a private course for an

organization's team of BI users.

**NOQSF**   

## Cognos Query Studio

This course provides students with an overview of report creation in IBM Cognos Query Studio, including how to arrange content in both list and crosstab layouts and apply filters and sorts to the report data. Students will also learn how to add easy-to-create calculations that provide additional insight and apply conditional formatting to the numeric data in their reports.

**Audience:**

- Business authors

**Prerequisites:**

- None

### Upcoming Sessions

No publicly scheduled dates-

this course is recommended to be

taken as a private course for an

organization's team of business

authors.

**NOASF**   

## Cognos Analysis Studio

This course introduces business authors to general dimensional concepts (dimensions, cubes, measures) before learning how to manipulate multidimensional data in the studio. Simple techniques such as drilling, swapping, filtering, and nesting will be covered before moving on to more advanced analysis features such as stacking, navigating levels and creating asymmetric crosstabs. Students will also learn about custom sorting and the creation of summary and item-based calculations to extend the user's analysis.

**Audience:**

- Business authors

**Prerequisites:**

- None

### Upcoming Sessions

No publicly scheduled dates-

this course is recommended to be

taken as a private course for an

organization's team of business

authors.

## NORSF

### Cognos Report Studio Fundamentals

This course introduces professional report authors to the fundamentals of IBM Cognos Report Studio, focusing on relational data, lists, crosstabs and charts as well as interactive features like prompts and report-to-report drill through. During the course, professional report authors will also learn how to add advanced formatting to the objects in their reports and how to apply conditional styles and rendering.

**Audience:**

- Professional report authors

**Prerequisites:**

- None

#### Upcoming Sessions

No publicly scheduled dates-  
this course is recommended to be  
taken as a private course for an  
organization's team of professional  
report authors.

## NOCWF

### Cognos Workspace

This course teaches business authors to assemble and share Workspaces of content from their IBM Cognos BI environment. Business authors will also learn to arrange and personalize content in an intuitive and interactive manner using Widgets, without requiring IT assistance. More specifically, students will create new calculations, add comments and annotations, and modify the formats and visualizations of the Widgets.

**Audience:**

- Business authors

**Prerequisites:**

- None

#### Upcoming Sessions

No publicly scheduled dates-  
this course is recommended to be  
taken as a private course for an  
organization's team of business  
authors.

## NOCWF-A

### Cognos Workspace Advanced - Relational and Dimensional Data with DMR Datasource

This course introduces IBM Cognos Workspace Advanced - a tool designed to combine the features of IBM Cognos Query Studio, Analysis Studio, and Report Studio Express, to eliminate "studio hopping" for users that require a variety of reporting techniques and functions. Students will build reports from relational and dimensional data packages, and learn how to leverage both types of data sources.

**Audience:**

- Business authors

**Prerequisites:**

- None

#### Upcoming Sessions

No publicly scheduled dates-  
this course is recommended to be  
taken as a private course for an  
organization's team of business  
authors.

## NOCW-AM

### Cognos Workspace Advanced with Cognos PowerCubes

This course introduces IBM Cognos Workspace Advanced- a tool designed to combine the features of IBM Cognos Query Studio, Analysis Studio, and Report Studio Express, to eliminate "studio hopping." Students will build reports from dimensional data packages and learn how to leverage IBM Cognos PowerCubes as a data source.

**Audience:**

- Business authors

**Prerequisites:**

- None

#### Upcoming Sessions

No publicly scheduled dates-  
this course is recommended to be  
taken as a private course for an  
organization's team of business  
authors.

## NOCW-ATM

### Cognos Workspace Advanced - Multidimensional Data with TM1 Cubes

This course introduces IBM Cognos Workspace Advanced- a tool designed to combine the features of IBM Cognos Query Studio, Analysis Studio, and Report Studio Express, to eliminate "studio hopping" for users who require a variety of reporting techniques and functions. Students will build reports from TM1 Cubes and learn IBM Cognos Workspace Advanced features designed to leverage TM1 as a data source.

**Audience:**

- Business authors

**Prerequisites:**

- None

#### Upcoming Sessions

No publicly scheduled dates-  
this course is recommended to be  
taken as a private course for an  
organization's team of business  
authors.

## EM4BI

### Esri Maps for IBM Cognos

This course covers an overview of Esri Maps for IBM Cognos, including key features and benefits, creating Report Studio reports with Esri Maps, and manipulating data. Students will be introduced to location analytics, and learn how to gain additional insight into IBM Cognos Reports using Esri mapping.

**Audience:**

- Individuals who want to use Esri mapping with IBM Cognos reporting

**Prerequisites:**

- None

#### Upcoming Sessions

No publicly scheduled dates-  
this course is recommended to be  
taken as a private course for an  
organization's team of business  
authors.

## SELF-PACED VIRTUAL CLASSES

### B5129G

#### IBM Cognos Metric Studio: Manage Business Performance

This course teaches consumers how to monitor the performance of an organization using scorecards, including how to access scorecards, navigate metrics and metric types, create projects and actions, and customize the Metric Studio environment to make it easier to monitor team/organizational performance.

**Audience:**

- Scorecard consumers

**Prerequisites:**

- Familiarity with Windows OS, and a web browser
- 

### B5143G

#### IBM Cognos Mobile Administration

This course teaches administrators the skills to install, configure, and administer IBM Cognos Mobile. Students will learn how to administer the mobile server, apply security, plan a successful implementation, and use best practices in report design.

**Audience:**

- Administrators

**Prerequisites:**

- Experience using IBM Cognos Connection
  - Experience with a mobile device
  - Knowledge of server administration and IBM Cognos architecture
- 

### B5169G

#### IBM Cognos Transformer: Create PowerCubes

This course covers how to define a PowerCube and the OLAP cube structure. Students will learn how to create dimensions and levels, build PowerCubes for use in IBM Cognos BI and easily analyze data by creating a simple analysis in IBM Cognos Analysis Studio.

**Audience:**

- Developers who design OLAP models for use in IBM Cognos BI

**Prerequisites:**

- None
- 

### B5A88G

#### IBM Cognos BI for Consumers

This course teaches students how to access reports, create report views, schedule reports and run reports with options. Students will learn how to take action on BI events by creating tasks and notifications, as well as how to generate, view, manage, comment, set alerts on, and create watch rules for events and saved output. Additionally, this course will teach students how to personalize the appearance of IBM Cognos Connection, and how to create dynamic dashboards.

**Audience:**

- Open

**Prerequisites:**

- None
-

## J2262G

### IBM Cognos BI: Combined Administration, Architecture and Logging

This course is designed to teach new administrators the fundamental tasks of administering servers and content in IBM Cognos BI. Students will identify components and sub-components of the IBM Cognos BI architecture and learn how to use tools and techniques to provide a foundation to troubleshoot issues.

**Audience:**

- Administrators

**Prerequisites:**

- Knowledge of web application server architectures
  - Security systems administration
  - Familiarity with Windows OS, and a web browser
- 

## P8125G

### IBM Cognos Analysis for Microsoft Excel - Analyze BI Data

This course introduces students to basic analysis for Microsoft Excel functionality, including how to connect to IBM Cognos data sources within Microsoft Excel and integrate IBM Cognos data into spreadsheets for further analysis, formatting, and layout options.

**Audience:**

- Analysts and business users

**Prerequisites:**

- Experience using Microsoft Excel



# IBM COGNOS ANALYTICS (v11)

## AVAILABLE TRAINING FORMATS:



In-Class



Instructor-Led Online



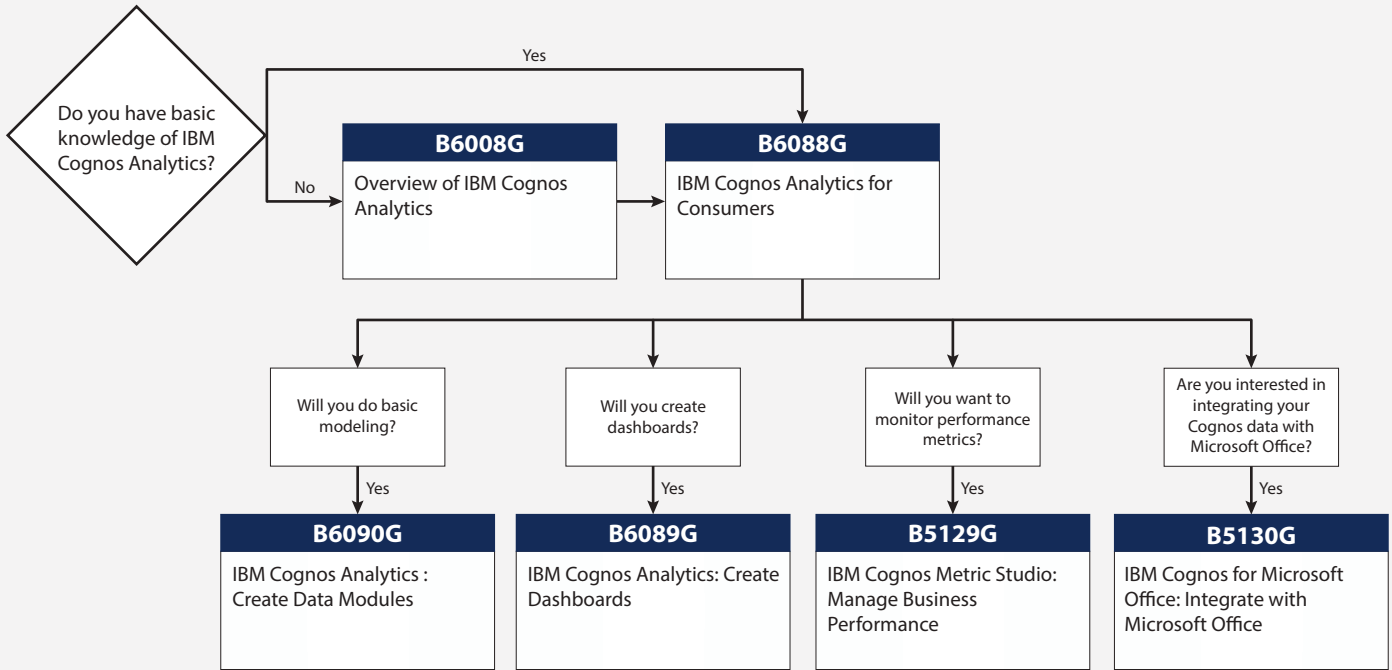
Self-Paced Virtual Classes



Customized

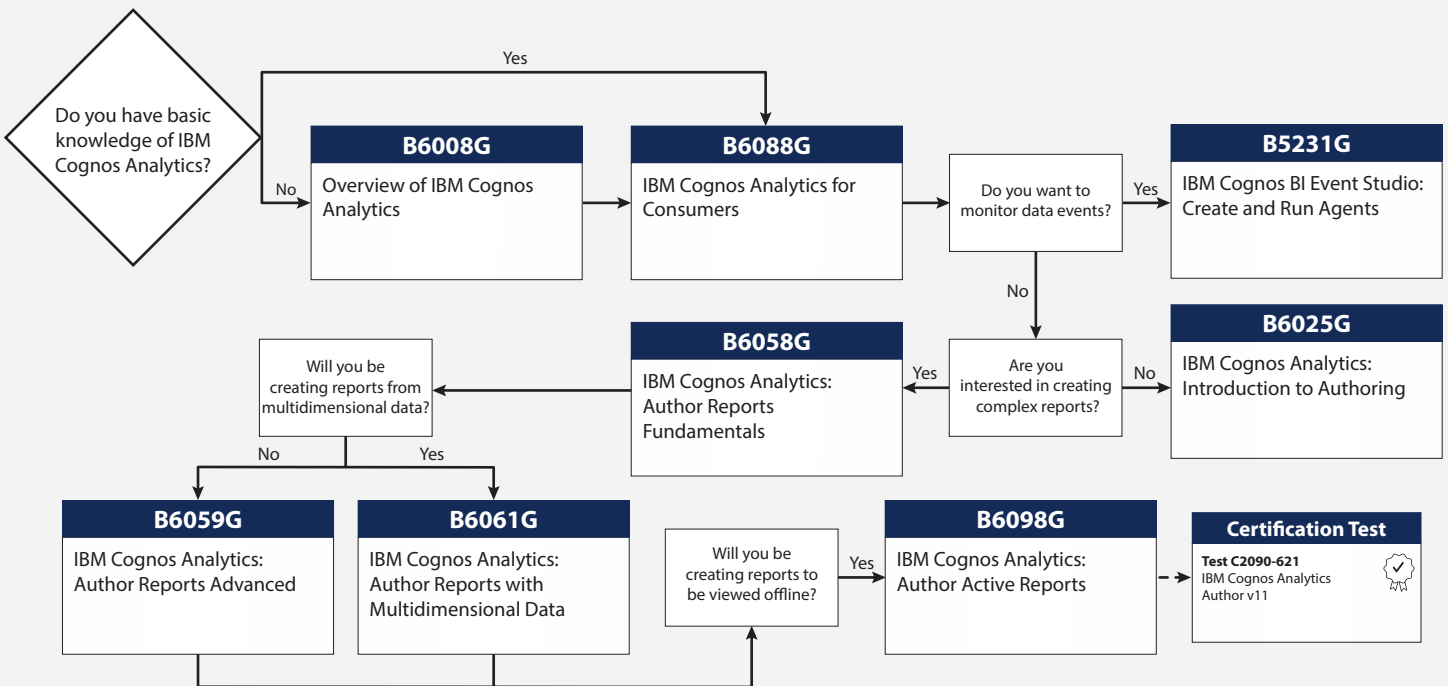
# CONSUMER

BI Cognos Consumer: As a BI Cognos consumer, you are familiar with accessing content, using reports, creating dashboards, and personalizing the appearance of the IBM Cognos Analytics portal.



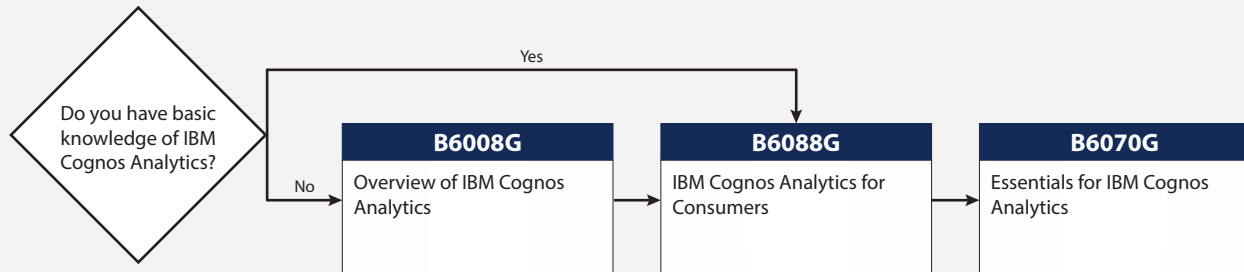
# AUTHOR

Build Professional Reports & Analyze Data: As a professional author, you are responsible for creating reports for a variety of audiences. Use this journey to develop your skills to build simple and complex reports.



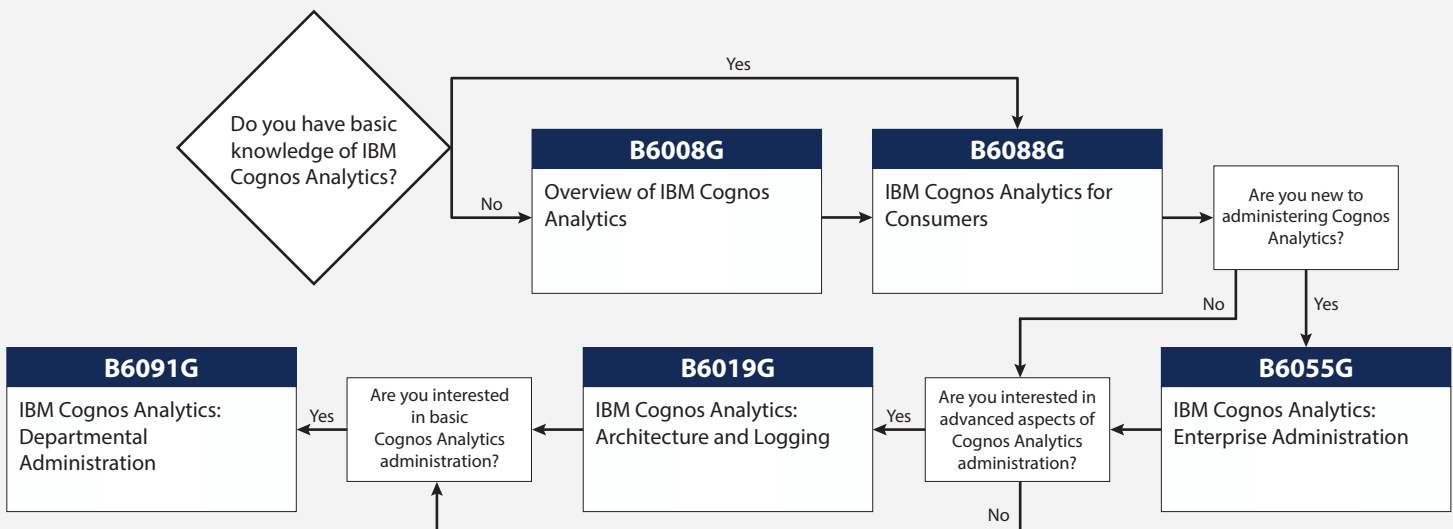
# PROJECT MANAGER

Manage Business Projects: As a project manager, you are responsible for managing the Cognos Analytics project from the initiation phase to project completion. Use this journey to learn the process of creating a Cognos Analytics solution, the underlying architecture and how the IBM implementation methodology complements top project management methodologies.



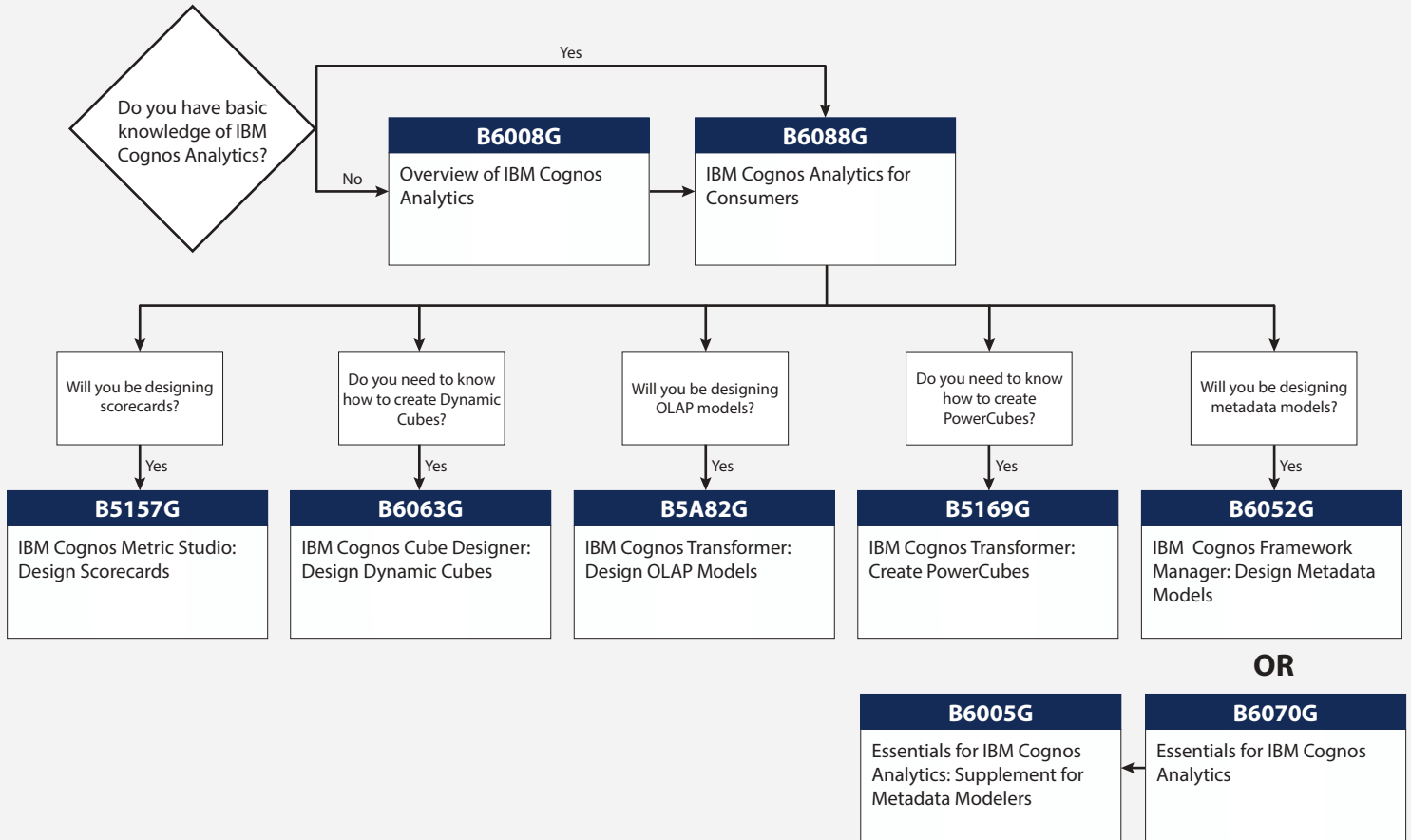
# ADMINISTRATOR

Administer the Cognos Analytics Platform: As an administrator, you are responsible for overseeing the technical aspects of your IBM Cognos Analytics enterprise. Use this journey to learn how to install and configure the IBM Cognos Analytics environment, as well as perform various server troubleshooting tasks and log analysis.



# DEVELOPER

Build Data Models, Cubes & Scorecards: As a developer, you are responsible for designing metadata models that enable your organization to build reports and analyze their data. Use this journey to develop your skills in building relational or multidimensional data models.



## B6008G

### Overview of IBM Cognos Analytics

This course provides a high-level overview of the IBM Cognos Analytics suite of products and their underlying architecture. Students will examine each component as it relates to an analytics solution, and will be shown a range of resources that provide additional information on each product.

**Audience:**

- Consumers, business authors, professional authors, developers, administrators, modelers, and project managers

**Prerequisites:**

- An understanding of your organization’s business intelligence process and reporting needs
- Familiarity with Windows OS

#### Upcoming Sessions

- Jan, 9, 2017- Markham/Online
- Feb, 10, 2017- Markham/Online
- Feb, 10, 2017- Ottawa
- Mar, 10, 2017- Markham/Online
- Apr, 7, 2017- Markham/Online
- May, 12, 2017- Markham/Online

## B6052G

### IBM Cognos Framework Manager: Design Metadata Models

This course introduces advanced metadata modeling concepts for predictable reporting and covers how to analyze results using Framework Manager. Students will learn the full scope of the metadata modeling process, from project creation to publishing metadata to the web.

**Audience:**

- Developers

**Prerequisites:**

- Knowledge of common industry-standard data structures and design
- Experience with SQL, and gathering requirements and analyzing data
- B6088G - IBM Cognos Analytics for Consumers (eLearning) (page 33) or equivalent experience
- B6058G - IBM Cognos Analytics: Author Reports Fundamentals (page 30) or equivalent experience (*recommended*)

#### Upcoming Sessions

- Jan, 16-20, 2017- Markham
- Feb 27-Mar 3, 2017- Ottawa
- Mar, 13-17, 2017- Markham/Online
- Apr, 17-21, 2017- Ottawa
- May, 8-12, 2017- Markham/Online
- May, 8-12, 2017- Vancouver

## B6055G

### IBM Cognos Analytics: Enterprise Administration

This course teaches new administrators fundamental installation, configuration, and administration tasks. This includes installing and configuring the IBM Cognos Analytics software, implementing security, and managing the server components. Administrators will also monitor and schedule tasks, create data sources, and manage and deploy content.

**Audience:**

- Administrators

**Prerequisites:**

- Knowledge of web application server architectures
- Knowledge of security systems administration
- B6088G - IBM Cognos Analytics for Consumers (eLearning) (page 33) or equivalent experience

#### Upcoming Sessions

- Jan, 23-25, 2017- Ottawa
- Feb, 27-29, 2017- Markham
- Mar, 20-22, 2017- Vancouver
- Apr, 3-5, 2017- Markham/Online
- May, 29-31, 2017- Markham
- Jun, 26-28, 2017- Markham

## B6058G

### IBM Cognos Analytics: Author Reports Fundamentals

Students will learn report-building techniques using relational data models, including enhancing, customizing, and managing professional reports.

**Audience:**

- Authors

**Prerequisites:**

- Familiarity with Windows OS and a web browser
- B6088G - IBM Cognos Analytics for Consumers (eLearning) (page 33) or equivalent experience

#### Upcoming Sessions

Jan, 9-11, 2017- Markham

Feb, 13-15, 2017- Ottawa

Mar, 6-8, 2017- Markham/Online

Mar, 20-22, 2017- Vancouver

Apr, 24-26, 2017- Markham/Online

May, 15-17, 2017- Ottawa

## B6059G

### IBM Cognos Analytics: Author Reports Advanced

Following the Fundamentals course, this course teaches advanced report-building techniques using relational data models, including ways to enhance, customize, and manage professional reports.

**Audience:**

- Report authors looking to use relational data models to build reports

**Prerequisites:**

- B6058G - IBM Cognos Analytics - Author Reports Fundamentals (page 30) or equivalent experience

#### Upcoming Sessions

Jan, 12-13, 2017- Markham

Feb, 16-17, 2017- Ottawa

Mar, 9-10, 2017- Markham/Online

Mar, 23-24, 2017- Vancouver

Apr, 6-7, 2017- Markham

Apr, 27-28, 2017- Markham

## B6061G

### IBM Cognos Analytics: Author Reports with Multidimensional Data

This advanced course will allow professional report authors to build on their expertise with IBM Cognos Analytics by applying dimensional techniques to reports. Students will author reports that navigate and manipulate dimensional data structures using the specific dimensional features available in IBM Cognos Analytics.

**Audience:**

- Report authors looking to use dimensional data sources to build reports

**Prerequisites:**

- B6058G - IBM Cognos Analytics: Author Reports Fundamentals (page 30) or equivalent experience
- Knowledge of dimensional data

#### Upcoming Sessions

Feb, 6-7, 2017- Markham

Mar, 8-9, 2017- Ottawa

Mar, 8-9, 2017- Calgary

May, 18-19, 2017- Online

May, 18-19, 2017- Ottawa

Jun, 22-23, 2017- Markham

## B6063G

### IBM Cognos Cube Designer: Design Dynamic Cubes

This course covers advanced metadata modeling for predictable reporting and analysis of results using IBM Cognos Cube Designer. Students will learn the full range of the metadata modeling process, including project creation, publishing a dynamic cube, and enabling end-users to easily author reports and analyze data.

**Audience:**

- Data modelers

**Prerequisites:**

- Knowledge of dimensional modeling and design
- Experience using the IBM Cognos Analytics portal and Administration
- B6088G - IBM Cognos Analytics for Consumers (eLearning) (page 33) or equivalent experience

#### Upcoming Sessions

- Feb, 23-24, 2017- Markham
- Mar, 16-17, 2017- Markham/Online
- Mar, 16-17, 2017- Vancouver
- Apr, 10-11, 2017- Ottawa
- May, 23-24, 2017- Markham
- Jun, 27-28, 2017- Ottawa

## B6070G

### Essentials for IBM Cognos Analytics

This accelerated course offering provides core project team members with a high-level overview of the IBM Cognos Analytics platform implementation, including three essential topic areas: modeling, report authoring, and administration of IBM Cognos Analytics.

*Additional eLearning modules are available for purchase, please contact the Newcomp Training Team for details.*

**Audience:**

- Core project team members: project managers, technical analysts, and developers

**Prerequisites:**

- Knowledge of common industry-standard data structures and design, and web application architectures
- Experience with SQL, gathering requirements and analyzing data
- Knowledge of security systems administration
- B6088G - IBM Cognos Analytics for Consumers (eLearning) (page 33) or equivalent experience

#### Upcoming Sessions

- Jan, 9-13, 2017- Ottawa
- Feb, 6-10, 2017- Markham
- Feb, 13-17, 2017- Halifax
- Mar, 27-31, 2017- Markham/Online
- Mar, 27-31, 2017- Ottawa
- May, 1-5, 2017- Markham/Online

## B6098G

### IBM Cognos Analytics: Author Active Reports

This course builds on students' IBM Cognos Analytics experience. Students will learn how to create interactive reports using IBM Cognos Active Report controls, which can then be distributed and consumed by users in a disconnected environment, such as on mobile devices.

**Audience:**

- Report authors looking to create interactive reports

**Prerequisites:**

- Basic understanding of IBM Cognos Analytics – Reporting
- B6058G - IBM Cognos Analytics: Author Reports Fundamentals (page 30) or equivalent experience

#### Upcoming Sessions

- Jan, 20, 2017- Ottawa/Online
- Feb, 10, 2017- Markham
- Mar, 31, 2017- Vancouver
- Apr, 21, 2017- Markham/Online
- May, 26, 2017- Ottawa
- Jun, 26, 2017- Markham

## B6019G

### IBM Cognos Analytics: Architecture and Logging

This course teaches administrators how to identify components and sub-components of the IBM Cognos Analytics architecture, and how to use tools and techniques to provide a foundation to troubleshoot issues. Students will also identify IBM Cognos Analytics components, examine its relationship with Java, and explore logging to assist with troubleshooting issues.

**Audience:**

- Administrators

**Prerequisites:**

- B6055G - IBM Cognos Analytics: Enterprise Administration course (page 29) or equivalent experience administering the IBM Cognos Analytics environment

### Upcoming Sessions

Jan, 26-27, 2017- Ottawa

Mar, 2-3, 2017- Markham

Mar, 23-24, 2017- Vancouver

Apr, 6-7, 2017- Markham/Online

Jun, 1-2, 2017- Markham

Jun, 29-30, 2017- Markham

## B6005G

### Essentials for IBM Cognos Analytics: Supplement for Metadata Modelers

This course provides students with the remainder of the metadata modeling concepts, found in the IBM Cognos Framework Manager: Design Metadata Models (v11) offering. This course provides a complete overview of the metadata modeling process, from initial project creation, to publishing metadata to the web.

**Audience:**

- Developers, modelers, and application developers

**Prerequisites:**

- Knowledge of common industry-standard data structures and design
- Experience with SQL, and gathering requirements and analyzing data
- B6070G - Essentials for IBM Cognos Analytics (page 31) or equivalent experience

### Upcoming Sessions

Jan, 16-17, 2017- Online

Feb, 13-14, 2017- Markham/Online

Apr, 3-4, 2017- Markham/Online

Apr, 3-4, 2017- Vancouver

May, 8-9, 2017- Markham/Online

May, 8-9, 2017- Winnipeg

## NOCAW

### What's New in Cognos 11

This course covers an overview of the features in Cognos 11, including navigation, consumption, self-service data discovery, and how to create data modules.

**Audience:**

- Open

**Prerequisites:**

- None

### Upcoming Sessions

Jan, 30, 2017- Markham/Online

Jan, 30, 2017- Ottawa

Mar, 10, 2017- Vancouver/Online

Apr, 3, 2017- Winnipeg/Online

May, 1, 2017- Markham/Online

May, 1, 2017- Ottawa



**NOCRF**



## IBM Cognos Analytics Report Authoring Fundamentals

This course introduces students to the fundamentals of reporting in IBM Cognos Analytics v11, a powerful business intelligence tool designed for user self-service. Students will be introduced to Lists, Crosstabs and Charts as well as interactive features like prompts and report drill-through. During the course students will also learn how to add advanced formatting to the objects in their reports, apply conditional styles, and integrate external data.

**Audience:**

- Professional report authors

**Prerequisites:**

- None

### Upcoming Sessions

No publicly scheduled dates-  
this course is recommended to be  
taken as a private course for an  
organization's team of professional  
report authors.

v11

IBM Cognos Analytics Courses

## SELF-PACED VIRTUAL CLASSES

### B5130G

#### IBM Cognos for Microsoft Office: Integrate with Microsoft Office

This course teaches consumers how to import reports and report elements from IBM Cognos Connection to Microsoft Excel, Microsoft PowerPoint, and Microsoft Word. Students will learn how to publish IBM Cognos-enabled workbooks, presentations, and documents to IBM Cognos Connection, and run entries in IBM Cognos Connection using IBM Cognos for Microsoft Office.

**Audience:**

- Consumers

**Prerequisites:**

- Familiarity with Windows OS, and a web browser
  - Knowledge of DB2
- 

### B5231G

#### IBM Cognos BI Event Studio: Create and Run Agents

This course introduces students to basic Event Studio techniques, including how to run and create agents to monitor events through a business life-cycle.

**Audience:**

- Professional report authors

**Prerequisites:**

- Familiarity with Windows OS, and a web browser
  - Knowledge of DB2
- 

### B6025G

#### IBM Cognos Analytics: Introduction to Authoring

This course covers ways to create, enhance, customize, and manage reports and charts using IBM Cognos Analytics - Reporting. Students will view demonstrations and work through scenarios that illustrate key introductory concepts while exploring the basics of the Reporting tool.

**Audience:**

- Authors

**Prerequisites:**

- Knowledge of your business requirements
  - Experience using Windows OS, and a web browser
- 

### B6088G

#### IBM Cognos Analytics for Consumers

This course teaches consumers how to access content, use reports, create dashboards, and personalize the appearance of IBM Cognos Analytics portal.

**Audience:**

- Open

**Prerequisites:**

- None
-

**B6089G** **IBM Cognos Analytics - Create Dashboards**

This course covers the basics of dashboard creation using IBM Cognos Analytics, including an introduction to its product layout and functionality, while gaining skills in creating interactive and informative dashboards. Students will identify data sources, customize content and presentation.

**Audience:**

- Analysts and business users

**Prerequisites:**

- Experience using Microsoft Excel
- 

**B6090G** **IBM Cognos Analytics - Create Data Modules**

Students will be introduced to the complete metadata modeling process, from creating data sources and data modules, to sharing metadata with other users, facilitating reports, and analysis. Students will learn how to use data servers and uploaded files as data sources, and how to add intent to their data model. Students will also learn how to add tables to their models, set and modify object properties, create calculations, identify joins, as well as how to clean, format, and group their data for reporting purposes.

**Audience:**

- Authors

**Prerequisites:**

- Report authoring experience
- 

**B6091G** **IBM Cognos Analytics - Departmental Administration**

This course covers how to use the administration capabilities available in the IBM Cognos Analytics 11.0 portal. Students will learn how to manage the security environment, perform deployment of application content, create and manage data server connections, and view and manage runtime activities.

**Audience:**

- Administrators

**Prerequisites:**

- Knowledge of web application server architectures and security systems administration
  - Familiarity with Windows OS, and a web browser
-

# IBM COGNOS PERFORMANCE MANAGEMENT

## AVAILABLE TRAINING FORMATS:



In-Class



Instructor-Led Online



Self-Paced Virtual Classes

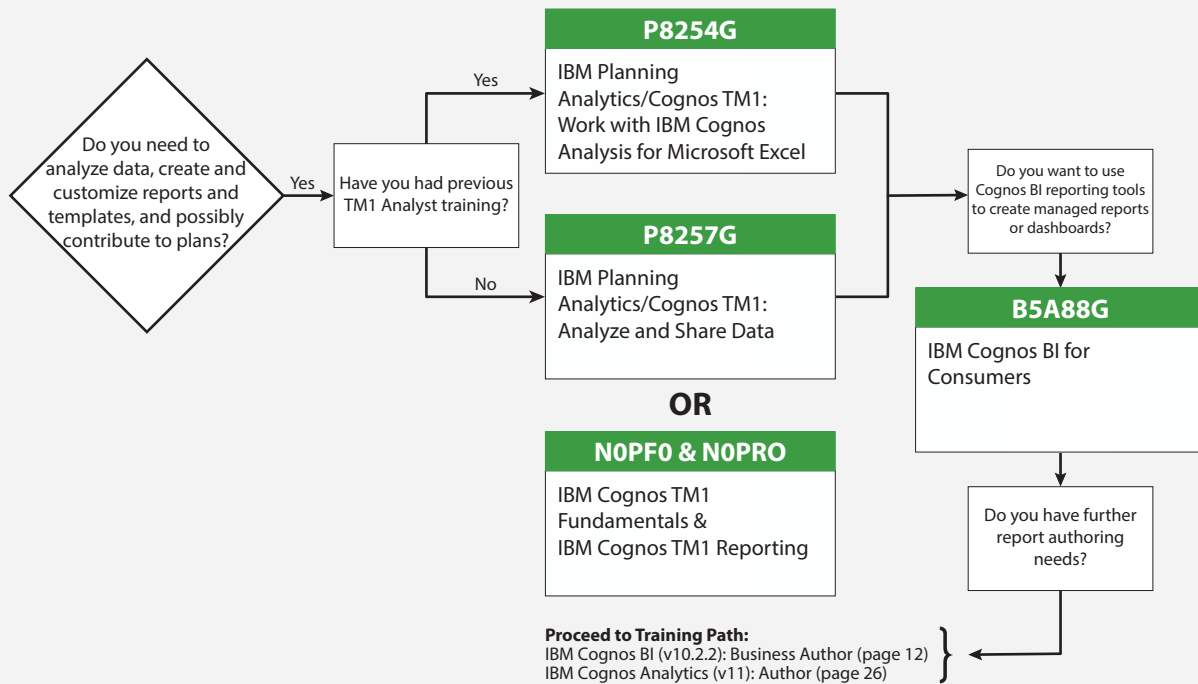


Customized

# IBM COGNOS TM1/IBM PLANNING ANALYTICS

## ANALYST

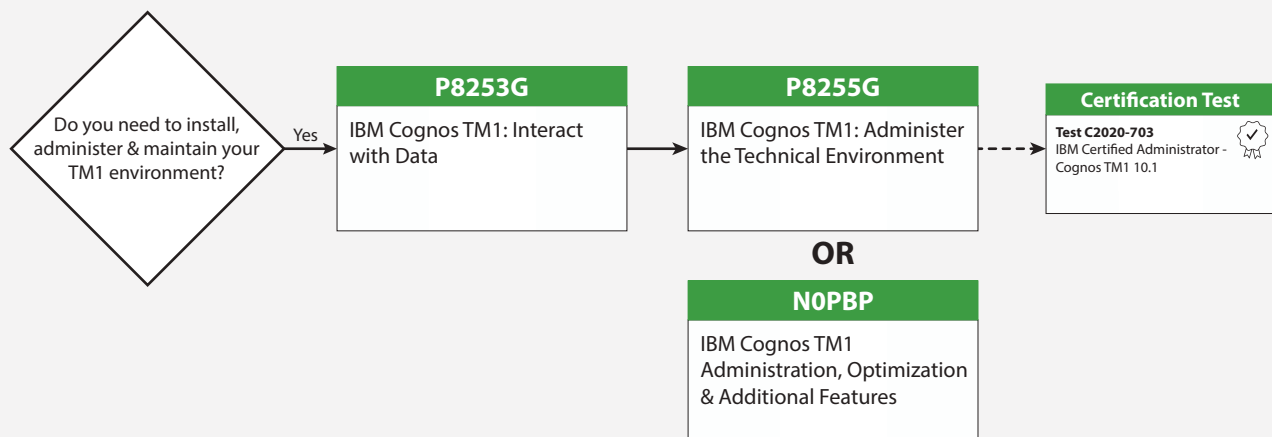
Build Custom Reports & Analyze Data: As an analyst, you are responsible for creating customized reports and templates, along with analyzing data and contributing to plans. Use this journey to learn the skills necessary to author reports and analyze data.



Recommended Training Paths

## ADMINISTRATOR

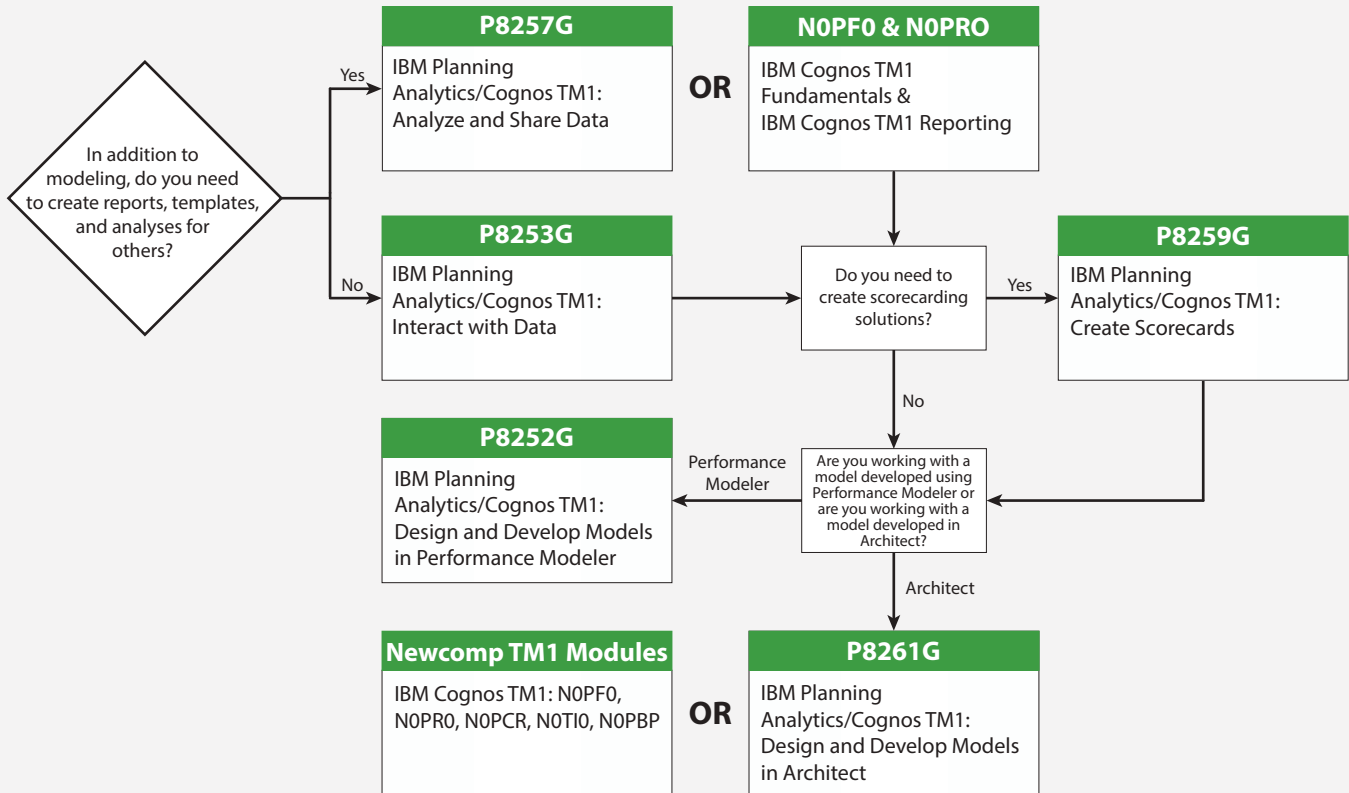
Administer the TM1 Platform: As an administrator, you are responsible for overseeing the technical aspects of your IBM Cognos TM1 enterprise software. Use this journey to learn how to install and configure the IBM Cognos TM1 environment, as well as perform various server troubleshooting tasks and log analysis.



## IBM COGNOS TM1/IBM PLANNING ANALYTICS

# MODELER

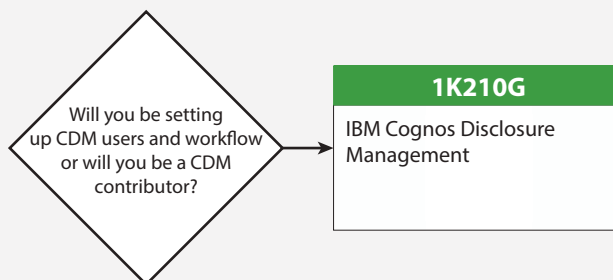
Develop Models & Analyze Data: As a modeler, you are responsible for designing and developing models, along with creating custom reports, templates and analyzing data. Use this journey to learn different modeling solutions in IBM Planning Analytics/Cognos TM1 platform.



## IBM COGNOS DISCLOSURE MANAGEMENT

# ADMINISTRATOR

Administer the IBM Cognos Disclosure Management Platform: As an administrator, you are responsible for overseeing the technical aspects of your IBM CDM platform. Take this course to learn how to install and configure the IBM CDM environment, as well as perform various server troubleshooting tasks and log analysis.



## P8252G

### IBM Planning Analytics/Cognos TM1: Design and Develop Models in Performance Modeler

This intermediate course teaches modelers how to build a complete model in IBM Cognos TM1 using Performance Modeler. Students will learn how to create and customize dimensions and cubes, import and link data, and build and maintain applications.

**Audience:**

- Modelers

**Prerequisites:**

- Basic knowledge of Online Analytical Processing (OLAP) and TM1
- Significant experience using Microsoft Excel (functions, macros)
- P8253G - IBM Cognos TM1: Interact with Data (page 42) (*recommended*) or equivalent experience

#### Upcoming Sessions

- Jan, 23-27, 2017- Markham/Online
- Mar, 6-10, 2017- Vancouver/Online
- Apr, 24-28, 2017- Ottawa/Online
- Apr, 24-28, 2017- Winnipeg
- May, 15-19, 2017- Markham
- Jun, 19-23, 2017- Online

## P8255G

### IBM Cognos TM1: Administer the Technical Environment

This advanced course teaches administrators how to install and administer the IBM Cognos TM1 environment, customize its architecture to fit into various infrastructures, and how to secure TM1 applications and monitor system performance.

**Audience:**

- Administrators

**Prerequisites:**

- Basic knowledge of OLAP, TM1, and networking
- P8253G - IBM Cognos TM1: Interact with Data (page 42) or equivalent experience (*recommended*)

#### Upcoming Sessions

- Jan, 12-13, 2017- Ottawa/Online
- Mar, 16-17, 2017- Markham/Online
- Mar, 16-17, 2017- Vancouver
- May, 23-24, 2017- Markham/Online
- May, 23-24, 2017- Ottawa
- Jun, 22-23, 2017- Markham

## P8257G

### IBM Planning Analytics/Cognos TM1: Analyze and Share Data

This course teaches analysts how to use IBM Cognos TM1 to analyze data to uncover trends and exceptions, create and customize reports and templates, and contribute to plans. Students will learn how to create analyses, input data into Microsoft Excel and the web, create custom data views, and build reports and forms in Microsoft Excel that communicate with TM1.

**Audience:**

- Analysts

**Prerequisites:**

- Familiarity with Windows OS, Microsoft Excel, and a web browser

#### Upcoming Sessions

- Jan, 9-11, 2017- Ottawa/Online
- Feb, 1-3, 2017- Markham/Online
- Feb, 1-3, 2017- Vancouver
- Mar, 13-15, 2017- Markham/Online
- Apr, 24-25, 2017- Winnipeg/Online
- Jun, 19-21, 2017- Markham

**P8259G**  

**IBM Planning Analytics/Cognos TM1: Create Scorecards**

This course covers how to create scorecarding solutions in TM1. Students will learn how to create all of the necessary scorecarding objects such as metrics cubes, diagrams, and maps, deploy the solution to the web for end-user consumption, and create an engaging dashboard presentation for the solution.

**Audience:**

- Developers

**Prerequisites:**

- Familiarity with Windows OS, and a web browser

**Upcoming Sessions**

Feb, 10, 2017- Winnipeg/Online

Mar, 24, 2017- Markham/Online

Mar, 24, 2017- Vancouver

May, 26, 2017- Markham/Online

May, 26, 2017- Calgary

Jun, 2, 2017- Ottawa/Online

**P8261G**   

**IBM Planning Analytics/Cognos TM1: Design and Develop Models in Architect**

This course covers how to build highly complex, customizable cube models in IBM Cognos TM1 using the Architect tool. This includes how to set up and verify dimensions, cubes, and views, manually enter data into these structures, and define the data that users can see. Students will learn how to transfer data into the TM1 model, including the use of Turbo Integrator processes. This course is ideal for users who already have models built with Architect and need a high degree of customization, or whose model complexity has evolved past Performance Modeler capabilities.

**Audience:**

- Modelers

**Prerequisites:**

- Basic knowledge of Online Analytical Processing (OLAP) and IBM Cognos TM1
- Significant experience with Microsoft Excel (functions, macros)
- P8257G - IBM Planning Analytics/Cognos TM1: Analyze and Share Data (page 38)

**Upcoming Sessions**

Feb 27-Mar 3, 2017- Markham/Online


Mar, 27-31, 2017- Ottawa/Online

Mar, 27-31, 2017- Winnipeg

Apr, 17-21, 2017- Vancouver/Online

Jun, 12-16, 2017- Ottawa/Online

Jun, 12-16, 2017- Markham

**NOPF0**   

**IBM Cognos TM1 Fundamentals**

This course introduces students to objects, concepts and techniques essential to building and maintaining IBM Cognos TM1 models. Students will build multiple dimensions and cubes both manually and programmatically (sourcing from a variety of data), and practice creating cube views and subsets. This course will also introduce cube rules, Slices, and Active Forms.

**Audience:**

- New users of Cognos TM1

**Prerequisites:**

- None

**Upcoming Sessions**

Jan, 23, 2017- Markham/Online

Jan, 23, 2017- Ottawa

Feb, 27, 2017- Markham/Online

Mar, 27, 2017- Markham/Online

Mar, 27, 2017- Vancouver

May, 1, 2017- Markham/Online



**NOPRO**

## IBM Cognos TM1 Reporting

This course introduces a number of IBM Cognos TM1's client interfaces: Architect, Perspectives, and TM1 Web. Students will extract data from TM1 cubes using a variety of tools and build input templates and reports using the most common techniques; Snapshot, Slices and, Active Forms.

**Audience:**

- Developers and power users who are responsible for creating reports and building input templates

**Prerequisites:**

- None

### Upcoming Sessions

Jan, 24, 2017- Markham/Online

Jan, 24, 2017- Ottawa

Feb, 28, 2017- Markham/Online

Mar, 28, 2017- Markham/Online

Mar, 28, 2017- Vancouver

May, 2, 2017- Markham/Online

**NOPCR**

## IBM Cognos TM1 Cube Rules

This course introduces students to the fundamentals of writing IBM Cognos TM1 cube rules, including a run-through of both intra and inter-cube rules along with C-level and String rules. This course will also introduce Skipcheck, Feeders, and TM1 Picklists.

**Audience:**

- Developers and power users

**Prerequisites:**

- None

### Upcoming Sessions

Jan, 25, 2017- Markham/Online

Jan, 25, 2017- Ottawa

Mar, 1, 2017- Markham/Online

Mar, 29, 2017- Markham/Online

Mar, 29, 2017- Vancouver

May, 3, 2017- Markham/Online

**NOTIO**

## IBM Cognos TM1 Turbo Integrator

This course introduces IBM Cognos TM1's ETL tool: Turbo Integrator. Students will practice performing common maintenance, and import/export tasks in the TM1 environment. Students will build a planning model from scratch using a variety of data sources, and create processes to perform common maintenance tasks such as creating subsets and updating reporting cubes.

**Audience:**

- Users building dimensions and loading cubes from external sources or involved in requirements gathering/design for a TM1 project

**Prerequisites:**

- None

### Upcoming Sessions

Jan, 26, 2017- Markham/Online

Jan, 26, 2017- Ottawa

Mar, 2, 2017- Markham/Online

Mar, 30, 2017- Markham/Online

Mar, 30, 2017- Vancouver

May, 4, 2017- Markham/Online

**NOPBP**   

## IBM Cognos TM1 Administration, Optimization & Additional Features

This course covers the administration side of IBM Cognos TM1 along with design principles & configuration for efficient models. Students will learn how to access TM1's logs and configuration files, monitoring, as well as ending threads on the TM1 server. This course will also introduce TM1 object security, and outline best practices for designing and developing a TM1 model.

**Audience:**

- Developers and administrators

**Prerequisites:**

- None

### Upcoming Sessions

Jan, 27, 2017- Markham/Online

Jan, 27, 2017- Ottawa

Mar, 31, 2017- Markham/Online

Mar, 31, 2017- Vancouver

May, 5, 2017- Markham/Online

Jun, 9, 2017- Markham/Online

**1K210G**   

## IBM Cognos Disclosure Management (CDM)

This course teaches professionals how to create, manage, and administer internal/external reports and workflows. Students will learn about report creation, CDM application configuration, dashboards, views, and the yearly rollover.

**Audience:**

- Professionals responsible for critical internal/external narrative or disclosure reporting

**Prerequisites:**

- Strong understanding of financial accounting concepts
- Familiarity with Windows OS, Microsoft Office, and a web browser

### Upcoming Sessions

Jan, 16-18, 2017- Markham/Online

Feb, 1-3, 2017- Ottawa

Mar, 13-15, 2017- Markham/Online

Mar, 13-15, 2017- Ottawa

Apr, 18-20, 2017- Markham

Apr, 18-20, 2017- Vancouver

## SELF-PACED VIRTUAL CLASSES

### P8253G

#### IBM Cognos TM1: Interact with Data

This course teaches contributors how to connect and access IBM Cognos TM1, build views, browse data, and navigate through TM1's user interface. Also included is an overview of how to use the front-end tools and Excel with multidimensional cubes, as well as an introduction to IBM Cognos Insight.

**Audience:**

- Contributors

**Prerequisites:**

- Familiarity with Windows OS, Microsoft Excel, and a web browser
- 

### P8254G

#### IBM Cognos TM1: Work with IBM Cognos Analysis for Microsoft Excel

This course is designed to show existing TM1 end-users how to work with TM1 data in Microsoft Excel using the new TM1 v10.2 client: IBM Cognos Analysis for Microsoft Excel.

**Audience:**

- Existing TM1 end-users

**Prerequisites:**

- Familiarity with Windows OS, Microsoft Excel, and a web browser

# IBM INFORMATION MANAGEMENT

## AVAILABLE TRAINING FORMATS:



In-Class



Instructor-Led Online



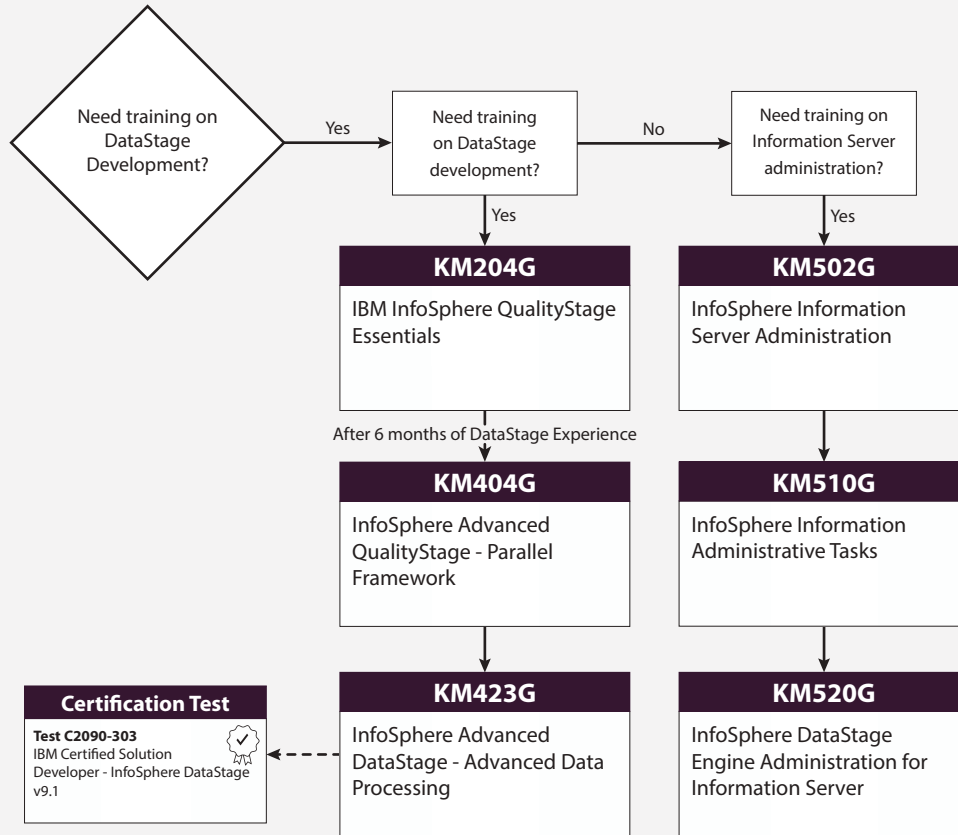
Self-Paced Virtual Classes



Customized

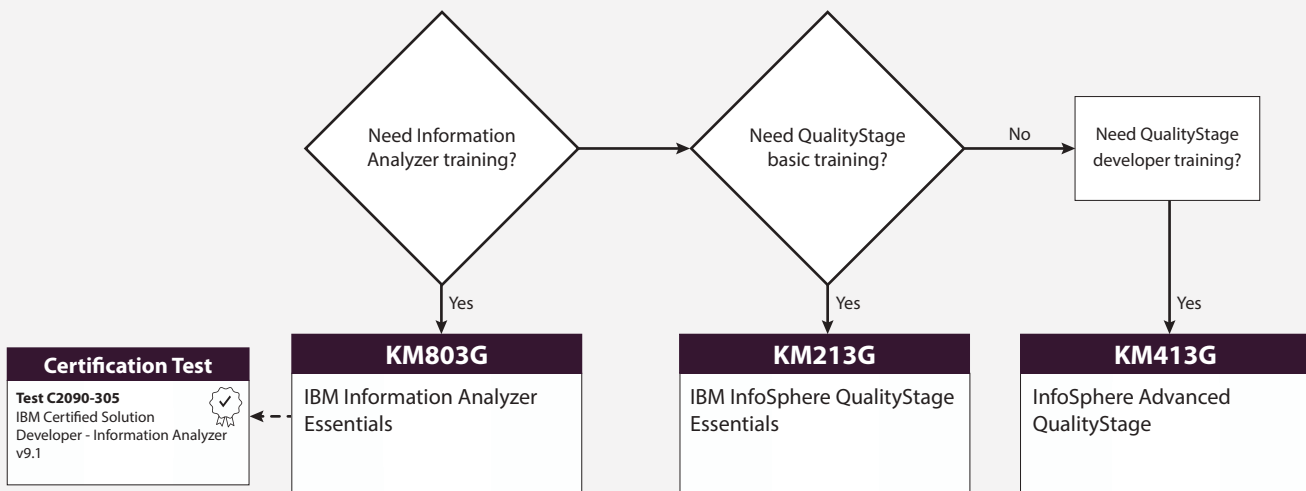
# DATA INTEGRATION ARCHITECT

Integrate Data: As a data integration architect, you are responsible for data modeling, and application of best practices when designing data management solutions. Use this journey to build your skills on how to transform structured and unstructured data and deliver it to any system in traditional scalable data warehouse or big data platform.



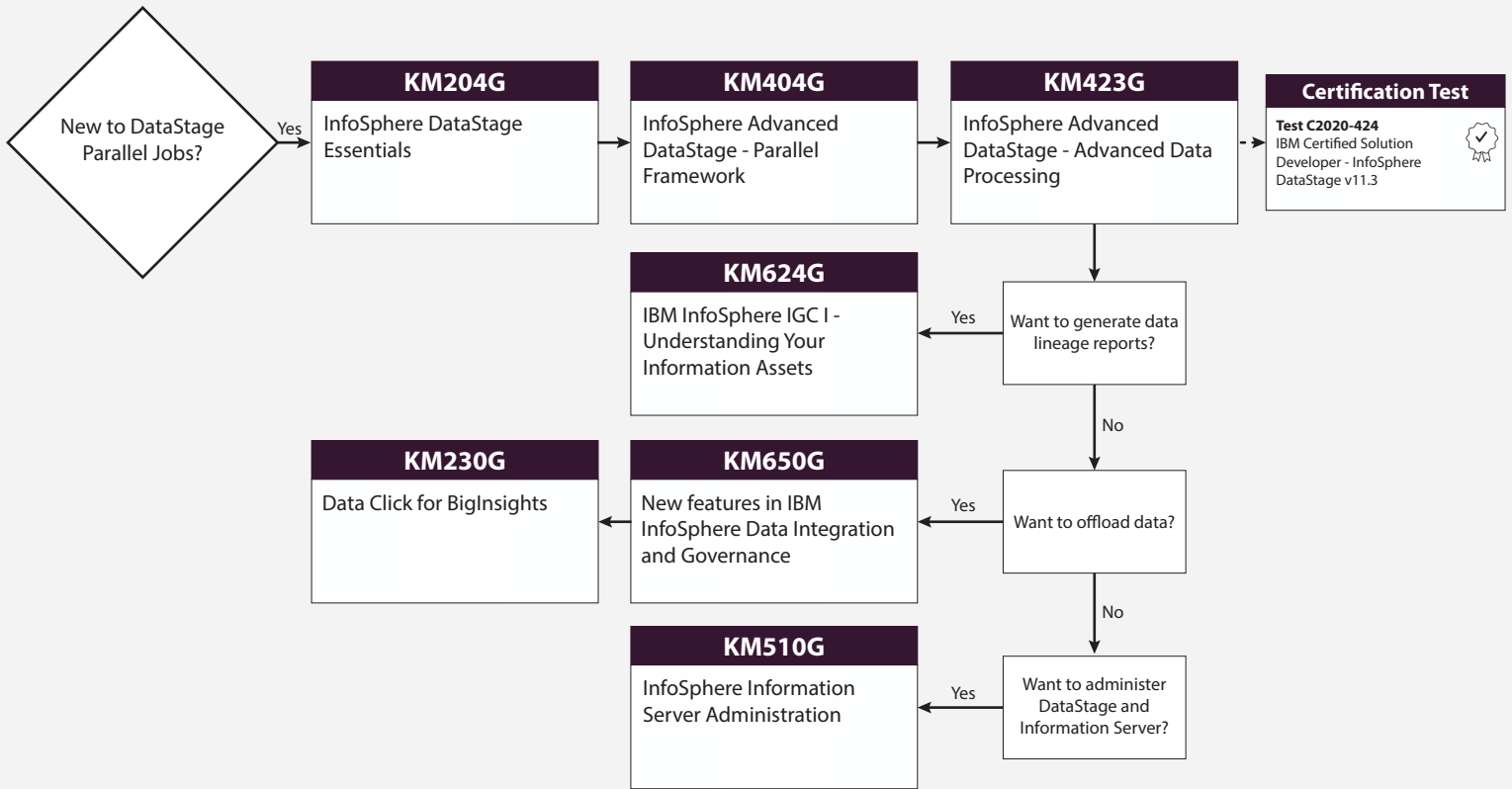
# DATA QUALITY ARCHITECT

Measure, Analyze, and Improve Data Quality: As a data quality architect, you are responsible for establishing quality metrics, along with designing data quality rules. Use this journey to build your skills on controlling and managing data quality with the IBM Infosphere platform.



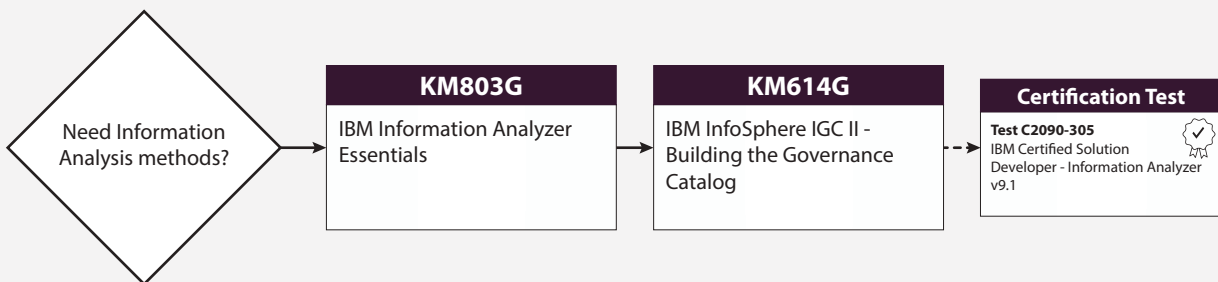
# DATA INTEGRATION DEVELOPER

Deliver Data Integrations: As a data integration developer, you are responsible for building data, database monitoring, data conversion, modeling and analysis. Use this journey to build your skills on how to transform structured and unstructured data and deliver it to any system on a scalable data warehouse or scalable big data platform.



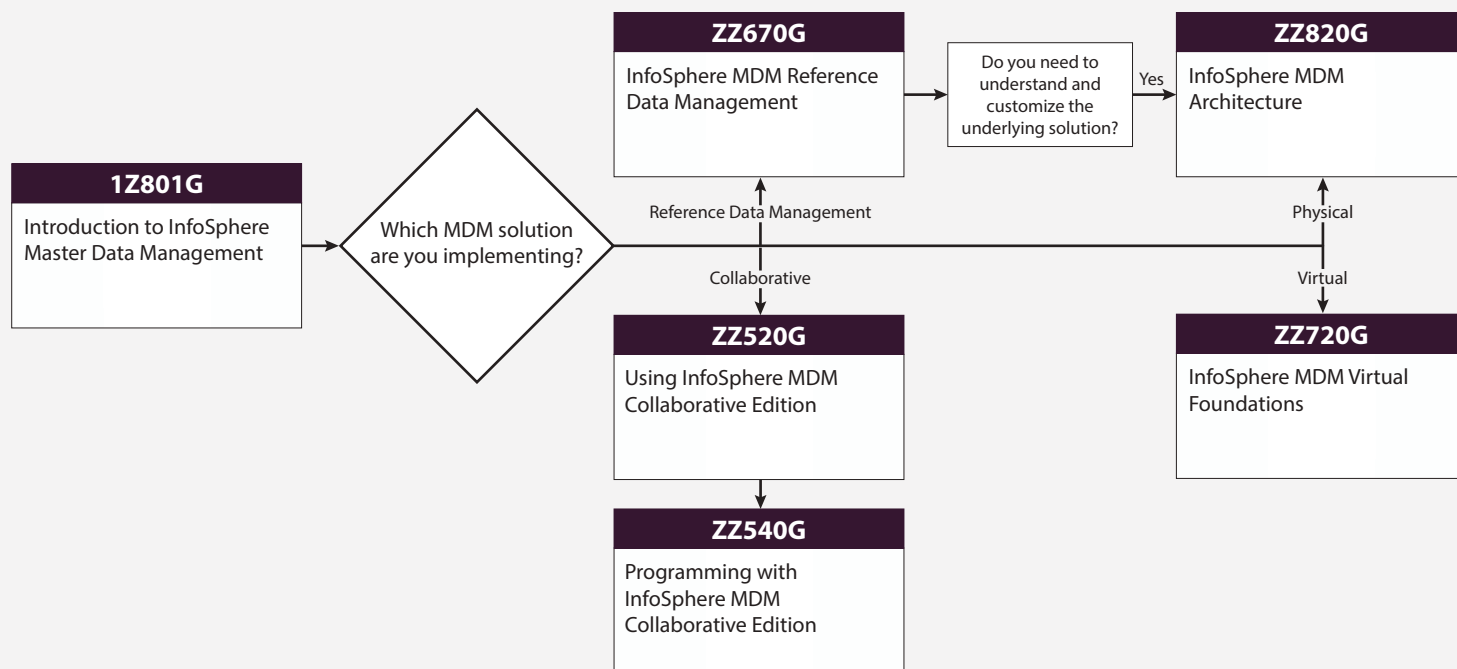
# BUSINESS ANALYST/DATA STEWARD

Govern Data: As an analyst/data steward, you are responsible for providing business users with high quality data. Use this journey to learn data quality tools to help provide business users with easily accessible and consistent business glossary data.



# INFOSPHERE MDM ARCHITECT

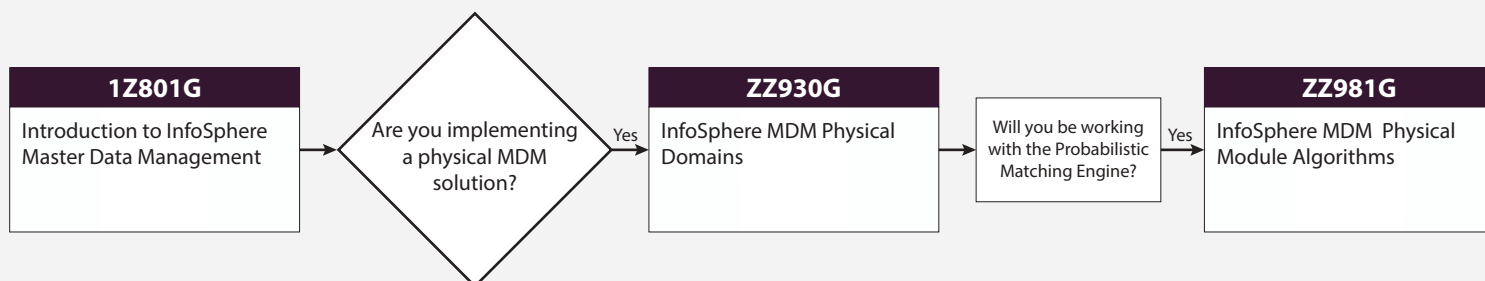
Implement Solutions: As an InfoSphere Master Data Management architect, you are responsible for implementing MDM within your enterprise. Use this journey to build your skills on the various components of MDM Architecture and how to set up the infrastructure to fit your organization's business requirements.



Recommended Training Paths

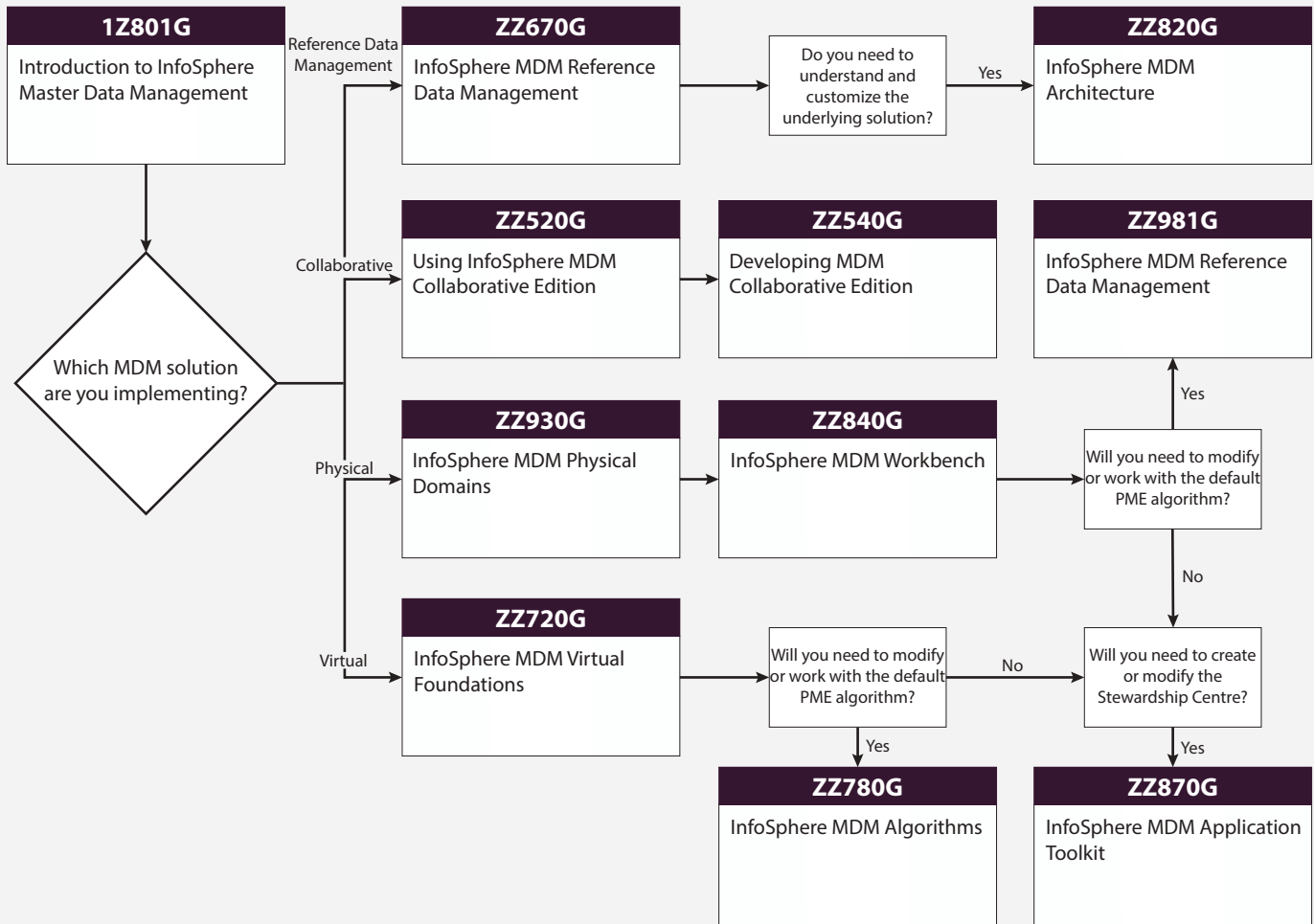
# INFOSPHERE MDM BUSINESS SPECIALIST

Implement Customization: As an InfoSphere MDM business specialist implementing physical solutions, you are responsible for working with and customizing algorithm configurations deployed to the InfoSphere MDM Probabilistic Matching Engine. Use this journey to build your skills in performing matching, linking, and searching fields. If you are implementing virtual, collaborative, or reference data management solutions, please refer to the Data Steward training path.



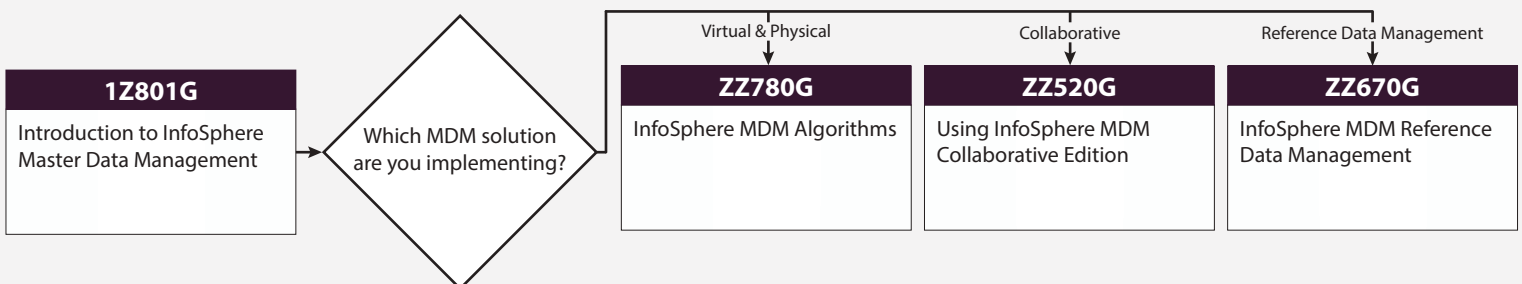
# INFOSPHERE MDM TECHNICAL SPECIALIST

As an InfoSphere MDM technical specialist, you are responsible for all aspects of development within the InfoSphere MDM family of products. Use this journey to get in-depth training for all components of this comprehensive IBM MDM product line.



# INFOSPHERE MDM DATA STEWARD

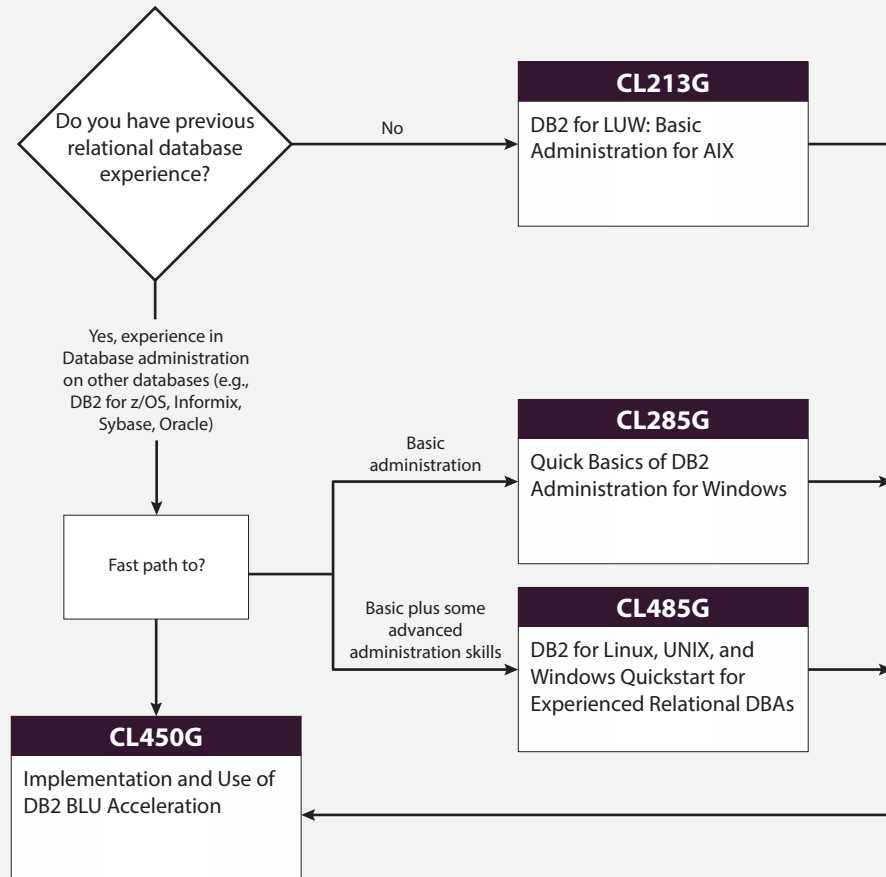
Govern Data: As an InfoSphere MDM data steward, you are responsible for providing business users with high quality data. Use this journey to learn data quality tools to help provide business users with easily accessible and consistent business glossary data.





# DATABASE ADMINISTRATION DB2 BLU ACCELERATION

Update your DB2 administrative skills to the latest version and features of the DB2 platform, including the latest DB2 BLU Acceleration technology.



**CL213G**  

**DB2 for LUW: Basic Administration for AIX**

This course teaches basic database administrative tasks using DB2 10.1 for Linux, UNIX, and Windows. These tasks include creating and populating databases and implementing a logical design to support recovery requirements. The access strategies selected by the DB2 Optimizer will be examined using the DB2 Explain tools.

**Audience:**

- System administrators, database administrators, and technical personnel

**Prerequisites:**

- Knowledge of basic OS functions such as utilities, file permissions, commands etc.
- Knowledge of SQL and the ability to construct DDL, DML, and authorization statements
- Knowledge of basic relational database concepts and objects such as tables, indexes, views, and join

**Upcoming Sessions**

- Jan 30-Feb 2, 2017- Online
- Mar, 6-9, 2017- Markham/Online
- Mar, 6-9, 2017- Ottawa
- Apr, 24-27, 2017- Vancouver/Online
- Jun, 12-15, 2017- Markham/Online
- Jun, 12-15, 2017- Winnipeg

**CL285G**   

**Quick Basics of DB2 Administration for Windows**

This course teaches basic database administrative tasks using DB2 10.5 for Linux, UNIX, and Windows. These tasks include creating database objects like table, indexes and views and loading data into the database with DB2 utilities like LOAD and INGEST. Students will learn how to implement automatic archival for database logs and how to recover a database to a specific point in time using the archived logs.

**Audience:**

- DBAs and technical individuals

**Prerequisites:**

- Knowledge of basic OS functions such as utilities, file permissions, commands etc.
- Knowledge of SQL and the ability to construct DDL, DML, and authorization statements
- Knowledge of basic relational database concepts and objects such as tables, indexes, views, and join

**Upcoming Sessions**

- Feb, 6-7, 2017- Online
- Mar, 13-14, 2017- Markham/Online
- Mar, 13-14, 2017- Ottawa
- May, 1-2, 2017- Vancouver/Online
- Jun, 19-20, 2017- Markham/Online
- Jun, 19-20, 2017- Winnipeg

**CL450G**   

**Implementation and Use of DB2 BLU Acceleration**

This course covers the implementation of DB2 BLU Acceleration and column-organized table support, for a new or existing DB2 database. Students will learn to describe how the column dictionaries used for DB2 BLU Acceleration are built and utilized to provide extreme compression for column-organized tables.

**Audience:**

- DB2 LUW experienced database administrators

**Prerequisites:**

- CL213G - DB2 for LUW: Basic Administration for AIX (page 49) or equivalent experience
- CL485G - DB2 for Linux, UNIX, and Windows Quickstart for Experienced Relational DBAs (page 50) or equivalent experience

**Upcoming Sessions**

- Feb, 24, 2017- Online
- Mar, 24, 2017- Markham/Online
- Mar, 24, 2017- Ottawa
- May, 12, 2017- Vancouver/Online
- Jun, 30, 2017- Markham/Online
- Jun, 30, 2017- Winnipeg

## CL485G

### DB2 for Linux, UNIX, and Windows Quickstart for Experienced Relational DBAs

This course teaches basic and advanced, database administrative tasks using DB2 10.5 for Linux, UNIX, and Windows. Students will learn how to implement automatic archival for database logs and how to plan a redirected database restore to relocate either selected table spaces or an entire database. The REBUILD option of RESTORE, which can build a database copy with a subset of the tablespaces, will be discussed.

**Audience:**

- Experienced DBAs and technical individuals

**Prerequisites:**

- Knowledge of basic OS functions such as utilities, file permissions, commands etc.
- Knowledge of SQL and the ability to construct DDL, DML, and authorization statements
- Knowledge of basic relational database concepts and objects such as tables, indexes, views, and join

#### Upcoming Sessions

- Feb, 14-17, 2017- Online
- Mar, 20-23, 2017- Markham/Online
- Mar, 20-23, 2017- Ottawa
- May, 8-11, 2017- Vancouver/Online
- Jun, 26-29, 2017- Markham/Online
- Jun, 26-29, 2017- Winnipeg

## KM204G

### IBM InfoSphere DataStage Essentials

This beginner course teaches ETL developers and project administrators how to develop parallel jobs in IBM InfoSphere DataStage. This course focuses on developers, and discusses only administration functions relevant to developers. Students will learn how to create parallel jobs that access sequential and relational data, and combine and transform the data using functions and other job components.

**Audience**

- ETL developers and project administrators

**Prerequisites:**

- Familiarity with Windows OS, and familiarity with database access techniques

#### Upcoming Sessions

- Jan 30-Feb 2, 2017- Markham/Online
- Jan 30-Feb 2, 2017- Ottawa/Online
- Mar, 20-23, 2017- Markham/Online
- Mar, 20-23, 2017- Ottawa
- Mar, 20-23, 2017- Vancouver
- Apr, 17-20, 2017- Winnipeg

## KM213G

### IBM InfoSphere QualityStage Essentials

This course teaches how to build QualityStage parallel jobs that investigate, standardize, match, and consolidate data records. Students will gain experience by building an application that combines customer data from three source systems into a single master customer record.

**Audience:**

- Data analysts responsible for data quality using QualityStage, data quality architects, and data cleansing developers

**Prerequisites:**

- Familiarity with Windows OS, and a text editor

#### Upcoming Sessions

- Feb, 21-24, 2017- Markham/Online
- Feb, 21-24, 2017- Calgary
- Apr, 3-6, 2017- Winnipeg/Online
- May, 1-4, 2017- Ottawa
- Jun, 19-22, 2017- Markham/Online
- Jun, 19-22, 2017- Vancouver

## KM230G

### Data Click v10 for BigInsights

This course covers Data Click functionality, including how to create and configure offload activities using Data Click Administrator, how to run these offload requests to move data into Hadoop, how Data Click works in conjunction with other components that come with Data Click to provide a complete end-to-end solution. Metadata Asset Manager is used to import the metadata for offload sources and targets into the metadata repository. The Information Governance Catalog is used to browse, query, and understand the data available for offloading. The Information Server Operations Console is used to monitor offload jobs after they are initiated.

**Audience:**

- Data scientists

**Prerequisites:**

- Familiarity with Hadoop, BigInsights, and/or DataStage would be helpful

### Upcoming Sessions

- Feb, 24, 2017- Markham/Online
- Feb, 24, 2017- Vancouver
- Mar, 20, 2017- Winnipeg/Online
- Apr, 10, 2017- Ottawa/Online
- Jun, 5, 2017- Markham/Online
- Jun, 5, 2017- Calgary

## KM404G

### IBM InfoSphere Advanced DataStage: Parallel Framework

This course introduces students to advanced parallel job development techniques in IBM InfoSphere DataStage. Students will develop a deeper understanding of its architecture, including IBM InfoSphere DataStage development and runtime environments. This will enable students to design robust, reusable parallel jobs that are optimized for performance.

**Audience:**

- Project administrators and ETL developers

**Prerequisites:**

- KM204G - IBM InfoSphere DataStage Essentials (page 50) or equivalent experience
- Minimum 1-year experience developing parallel jobs using IBM InfoSphere DataStage

### Upcoming Sessions

- Feb, 8-10, 2017- Markham/Online
- Feb, 8-10, 2017- Ottawa
- Mar, 27-29, 2017- Ottawa/Online
- Mar, 27-29, 2017- Vancouver
- Apr, 24-26, 2017- Markham/Online
- Apr, 24-26, 2017- Winnipeg

## KM413G

### IBM InfoSphere Advanced QualityStage

This course introduces students to the QualityStage data cleansing process, including how to prepare an unstructured data source for loading into an existing data target, cleansing and standardizing the source data by building a customer rule set, as well as how to build a reference match to relate the cleansed source data to the existing target data.

**Audience:**

- Programmers, data analysts, data quality architects, data cleansing developers, and data quality developers

**Prerequisites:**

- KM213G - IBM InfoSphere QualityStage Essentials (page 50) or equivalent experience
- Familiarity with Windows OS, and a text editor
- Basic statistics knowledge would be helpful

### Upcoming Sessions

- Feb 27-Mar 2, 2017- Markham/Online
- Feb 27-Mar 2, 2017- Calgary
- Apr, 10-13, 2017- Winnipeg/Online
- May, 8-11, 2017- Ottawa
- Jun, 25-29, 2017- Markham/Online
- Jun, 25-29, 2017- Vancouver

## KM423G

### IBM InfoSphere Advanced DataStage: Advanced Data Processing

This course introduces students to advanced parallel job data processing techniques in IBM InfoSphere DataStage. This includes developing data techniques for processing complex data resources including relational data, unstructured data (Excel spreadsheets), and XML data. Additionally, students will learn advanced data processing techniques, such as data masking and data validation using data rules, as well as techniques for updating data in a star schema data warehouse using the DataStage Slowly Changing Dimension stage.

**Audience:**

- Experienced InfoSphere DataStage developers

**Prerequisites:**

- KM404G - IBM InfoSphere Advanced DataStage: Parallel Framework (page 51) or equivalent experience

#### Upcoming Sessions

Feb, 13-14, 2017- Markham/Online

Feb, 13-14, 2017- Ottawa

Mar, 30-31, 2017- Ottawa/Online

Apr, 27-28, 2017- Winnipeg

Apr, 27-28, 2017- Markham/Online

Jun, 15-16, 2017- Ottawa/Online

## KM510G

### IBM InfoSphere Information Server Administrative Tasks

This course provides an overview of key administration features available in Information Server and its suite of products and components, with a focus on developing basic administrative skills such as user management, session management, and reporting management tasks. This course also covers the use of command line tools such as istool and encrypt.

**Audience:**

- Those administering Information Server and its product components

**Prerequisites:**

- None

#### Upcoming Sessions

Feb, 8, 2017- Markham/Online

Feb, 8, 2017- Ottawa

May, 1, 2017- Markham/Online

May, 1, 2017- Ottawa

May, 1, 2017- Vancouver

Jun, 20, 2017- Markham/Online

## KM520G

### IBM InfoSphere DataStage Engine Administration for Information Server

This course teaches students how to configure, manage, and monitor the InfoSphere DataStage Engine. Students will be introduced to the DataStage project configuration, the Engine's development and runtime environments, and its data source connectivity. In addition, students will learn how to import and export DataStage objects, how to run and monitor DataStage jobs through the command line and GUI, and how to use some important Engine utilities.

**Audience:**

- Information Server and InfoSphere DataStage administrators

**Prerequisites:**

- KM510G - IBM InfoSphere Information Server Administrative Tasks (page 52) or equivalent experience

#### Upcoming Sessions

Feb, 9, 2017- Markham/Online

Feb, 9, 2017- Ottawa

May, 2, 2017- Markham/Online

May, 2, 2017- Ottawa

May, 2, 2017- Vancouver

Jun, 19, 2017- Markham/Online

**KM614G**   

## IBM InfoSphere Information Governance Catalog: Building the Governance Catalog

This beginner course teaches students how to use the Information Governance Catalog to govern information assets by developing a governance catalog of categories and terms. This catalog documents information assets, governance policies, and rules that implement the high-level strategy and objectives of a governance program.

**Audience:**

- Information Governance Catalog users

**Prerequisites:**

- Familiarity with Windows OS and Information Server products  
(recommended)

### Upcoming Sessions

Jan, 20, 2017- Markham/Online

Jan, 20, 2017- Vancouver

Mar, 20, 2017- Ottawa/Online

May, 5, 2017- Winnipeg

May, 4, 2017- Markham/Online

Jun, 20, 2017- Ottawa

**KM624G**   

## IBM InfoSphere Information Governance Catalog: Understanding Your Information Assets

Students will learn the skills necessary to capture and analyze metadata stored within the Information Server repository using the Information Governance Catalog.

**Audience:**

- Information Governance Catalog users

**Prerequisites:**

- Familiarity with Windows OS and Information Server products  
(recommended)

### Upcoming Sessions

Jan, 19, 2017- Markham/Online

Jan, 19, 2017- Vancouver

Mar, 21, 2017- Ottawa/Online

May, 4, 2017- Winnipeg

May, 5, 2017- Markham/Online

Jun, 19, 2017- Ottawa

**KM650G**   

## New Features in IBM InfoSphere Data Integration and Governance

Students will be introduced to new data integration and governance features in IBM InfoSphere Information Server and IBM InfoSphere MDM. Each unit in the course covers a separate product or component of IBM InfoSphere Information Server and IBM InfoSphere MDM.

**Audience:**

- Experienced users and developers

**Prerequisites:**

- Familiarity with earlier versions of IBM InfoSphere Information Server or IBM InfoSphere MDM

### Upcoming Sessions

Feb, 21, 2017- Markham/Online

Feb, 21, 2017- Calgary

Apr, 5, 2017- Vancouver

Apr, 5, 2017- Ottawa/Online

May, 31, 2017- Markham/Online

Jun, 30, 2017- Online

## KM803G

### IBM Information Analyzer Essentials

This course teaches data analysts how to use the IBM InfoSphere suite to analyze data and report results. Additionally, the information discovered during analysis will be used to construct data rules. Students will explore techniques for delivering data analysis results to ETL developers and demonstrate how to develop more meaningful metadata to reflect data discovery results.

**Audience:**

- Data analysts and/or data quality analysts

**Prerequisites:**

- Familiarity with Open Database Connectivity (ODBC) and relational database access techniques
- Data modeling experience would be helpful

#### Upcoming Sessions

- Feb, 14-17, 2017- Markham
- Mar, 20-23, 2017- Ottawa/Online
- Mar, 20-23, 2017- Vancouver
- Apr, 10-13, 2017- Markham/Online
- May, 22-25, 2017- Winnipeg/Online
- Jun, 26-29, 2017- Online

## ZZ520G

### Using InfoSphere MDM Collaborative Edition

This course is designed to provide not only the essentials of understanding Master Data Management (MDM) and Product Information Management (PIM) concepts but also cover a breadth of InfoSphere MDM Collaborative Edition feature functions. Students will explore how to use the newly designed web interface to easily create data objects, items, categories, and other artifacts that will create the master data solution.

**Audience:**

- Business analysts, developers, implementation consultants, support engineers, technical sales and marketing individuals, sales and marketing individuals, project managers, and system administrators

**Prerequisites:**

- None

#### Upcoming Sessions

- Jan, 25-27, 2017- Markham/Online
- Mar, 6-8, 2017- Winnipeg/Online
- Apr, 5-7, 2017- Ottawa/Online
- Apr, 5-7, 2017- Markham/Online
- May, 3-5, 2017- Vancouver/Online
- Jun, 5-7, 2017- Online

## ZZ540G

### Programming with InfoSphere MDM Collaborative Edition

This course teaches students how to setup their environment and begin programming with MDM CE. Using IBM's Implementation Methodology Approach (use cases), students will have first-hand experience building a solution that incorporates the functionality of the MDM CE product, along with best practices for programming with MDM CE.

**Audience:**

- Developers, solution architects, technical architects, and technical specialists

**Prerequisites:**

- ZZ520G - Using InfoSphere MDM Collaborative Edition (page 54) (*recommended*)
- Familiarity with eclipse based Integrated Development Environment
- +2 years Java programming experience

#### Upcoming Sessions

- Feb, 6-9, 2017- Markham/Online
- Mar, 20-23, 2017- Winnipeg/Online
- Apr, 18-21, 2017- Ottawa/Online
- Apr, 18-21, 2017- Markham/Online
- May, 15-18, 2017- Vancouver/Online
- Jun, 19-22, 2017- Online

## ZZ610G

### Data Model and Service Mapping for InfoSphere MDM Advanced Edition

This course introduces Data Domains for InfoSphere Master Data Management 10 Advanced Edition. Students will take a comprehensive look at the three core data domains of InfoSphere MDM: Party, Account, and Product. For each of the domains spanned by InfoSphere MDM, students will be exposed to the data model, services, and rules associated with the main entities of that domain.

**Audience:**

- Infrastructure specialists, technical specialists, product consultants, support engineers, sales and marketing personnel, project managers, and system architects

**Prerequisites:**

- Students should have a high-level understanding of MDM Server or WebSphere Customer Center

Upcoming Sessions	
Feb, 21-23, 2017-	Markham/Online
Apr, 3-5, 2017-	Winnipeg/Online
May, 1-3, 2017-	Ottawa/Online
May, 1-3, 2017-	Markham/Online
May, 29-30, 2017-	Vancouver
May, 29-30, 2017-	Calgary

## ZZ670G

### InfoSphere MDM Reference Data Management

This course prepares students to implement the InfoSphere Reference Data Management solution, and understand how the solution will work within their organization. Students will install and use the InfoSphere Reference Data Management Hub and Console to manage data sets, data types, mappings, hierarchies and subscriptions. For each core area, the instructor will explain the high-level concepts and have the students work with the feature in the lab exercises.

**Audience:**

- Technical specialists, support engineers, and system architects

**Prerequisites:**

- None

Upcoming Sessions	
Jan, 19-20, 2017-	Markham/Online
Feb, 27-28, 2017-	Winnipeg/Online
Mar, 30-31, 2017-	Ottawa/Online
Mar, 30-31, 2017-	Markham/Online
Apr, 24-25, 2017-	Vancouver/Online
May, 29-30, 2017-	Online

## ZZ720G

### InfoSphere MDM Virtual Foundation

This course introduces the major components of the InfoSphere MDM Virtual module, the data model, the matching engine and how customization can be implemented. Students will learn how to invoke the InfoSphere MDM interactions, and the various configuration and extension points of a service. This course has a heavy emphasis on exercises where students will deploy a new MDM configuration, invoke interactions, walk through the default matching algorithm, and create a custom handler and composite view.

**Audience:**

- Technical specialists who will be developing a solution using the InfoSphere MDM Virtual Module

**Prerequisites:**

- None

Upcoming Sessions	
Jan 30-Feb 1, 2017-	Markham/Online
Mar, 13-15, 2017-	Winnipeg/Online
Apr, 10-12, 2017-	Ottawa/Online
Apr, 10-12, 2017-	Markham/Online
May, 8-10, 2017-	Vancouver/Online
June, 12-14, 2017-	Online



## ZZ780G

### InfoSphere MDM Algorithms

This course prepares students to work with and customize the algorithm configurations deployed to the InfoSphere MDM Probabilistic Matching Engine (PME) for Virtual and Physical MDM implementations. The PME is the heart of all Matching, Linking, and Searching for entities (Person, Organization, etc) that exist in InfoSphere MDM. This course has a heavy emphasis on exercises, where students will implement the customization discussed in the course to perform matching, linking, and searching on fields not provided by the default implementation.

**Audience:**

- Business and technical specialists working with the Matching, Linking, and Search services of InfoSphere MDM

**Prerequisites:**

- Experience with InfoSphere MDM (*recommended*)

#### Upcoming Sessions

- Feb, 1-2, 2017- Markham/Online
- Mar, 13-14, 2017- Online
- Apr, 12-13, 2017- Ottawa/Online
- Apr, 12-13, 2017- Vancouver
- May, 23-24, 2017- Winnipeg/Online
- Jun, 12-13, 2017- Markham/Online

## ZZ820G

### InfoSphere MDM Architecture

This course introduces the major components of the InfoSphere MDM Architecture and how each component interacts. Students will learn how InfoSphere MDM responds once a service is invoked and the various configuration and extension points of a service. This course prepares students to identify how MDM will fit into their organization and what pieces may be customized to fit their business requirements.

**Audience:**

- Infrastructure specialists, technical specialists, support engineers, and system architects

**Prerequisites:**

- Working knowledge of Java EE architecture (*recommended*)

#### Upcoming Sessions

- Jan, 23-24, 2017- Markham/Online
- Mar, 1-2, 2017- Winnipeg/Online
- Apr, 3-4, 2017- Ottawa/Online
- Apr, 3-4, 2017- Markham/Online
- May, 1-2, 2017- Vancouver/Online
- Jun, 1-2, 2017- Online

## ZZ840G

### InfoSphere MDM Workbench

This course takes students through the process of customizing both the Virtual and Physical MDM using the InfoSphere MDM Workbench. The course will focus on the core features of the Workbench: Creating a Physical MDM Addition, creating a Physical MDM Extension, creating a Physical MDM Behavior Extension, creating a composite service, deploying a Virtual MDM configuration, configuring the Virtual Data Model, creating a Virtual Custom Composite View, creating a Virtual Callout Handler, generating an enterprise service interface using the Virtual data model and customizing a Hybrid implementation.

**Audience:**

- Infrastructure specialists, technical specialists, support engineers, and system architects

**Prerequisites:**

- Working knowledge of Java EE architecture and XML concepts
- ZZ610G - Data Model and Service Mapping for InfoSphere MDM Advanced Edition (page 55)

#### Upcoming Sessions

- Jan, 25-27, 2017- Markham/Online
- Mar, 6-8, 2017- Online
- Apr, 5-7, 2017- Ottawa/Online
- Apr, 5-7, 2017- Vancouver
- May, 15-17, 2017- Winnipeg/Online
- Jun, 5-7, 2017- Markham/Online

**ZZ870G**   

## InfoSphere MDM Application Toolkit

This course introduces students to the Business Process Manager (BPM) and the Process Designer to create processes that will use MDM data and services. This course has a heavy emphasis on exercises and takes students through creating a process to search and update a customer's address.

**Audience:**

- Individuals that will be using the InfoSphere MDM Application Toolkit to build processes that involve the Physical or Virtual MDM

**Prerequisites:**

- 1Z801G - Introduction to InfoSphere MDM (page 58) (*recommended*)

Upcoming Sessions	
Jan, 30-31, 2017-	Markham/Online
Mar, 9-10, 2017-	Online
Apr, 10-11, 2017-	Ottawa/Online
Apr, 10-11, 2017-	Vancouver
May, 18-19, 2017-	Winnipeg/Online
June, 8-9, 2017-	Markham/Online

**ZZ930G**   

## InfoSphere MDM Physical Domains

This course introduces Data Domains for the InfoSphere Master Data Management Physical Module. This course takes a comprehensive look at the three core data domains of InfoSphere MDM: Party, Account, and Product. For each of the domains spanned by InfoSphere MDM, students will be exposed to the data model, services, and rules associated with the main entities of that domain.

**Audience:**

- Individuals looking to get an understanding of the Data Domains for the InfoSphere Master Data Management Physical Module

**Prerequisites:**

- 1Z801G - Introduction to InfoSphere Master Data Management (page 58) or equivalent experience (*recommended*)
- A high-level understanding of XML and the ability to make simple modifications to XML documents
- Knowledge of basic relational database concepts and objects such as tables

Upcoming Sessions	
Feb, 13-15, 2017-	Markham/Online
Mar, 27-29, 2017-	Winnipeg/Online
Apr, 24-26, 2017-	Ottawa/Online
Apr, 24-26, 2017-	Markham/Online
May, 23-25, 2017-	Vancouver/Online
Jun, 26-28, 2017-	Online

**ZZ981G**   

## InfoSphere MDM Physical Module Algorithms

This course prepares students to work with and customize the algorithm configurations deployed to the InfoSphere MDM Probabilistic Matching Engine (PME) for the Physical MDM implementation.

**Audience:**

- Business and technical specialists working with the Suspect Duplicate Processing and Search services of InfoSphere MDM.

**Prerequisites:**

- 1Z801G - Introduction to InfoSphere Master Data Management (page 58)
- ZZ780G - InfoSphere MDM Algorithms (page 56)

Upcoming Sessions	
Feb, 21-23, 2017-	Markham/Online
Apr, 3-5, 2017-	Winnipeg/Online
May, 1-3, 2017-	Ottawa/Online
May, 1-3, 2017-	Markham/Online
May, 29-30, 2017-	Vancouver
May, 29-30, 2017-	Calgary

## SELF-PACED VIRTUAL CLASSES

**1Z801G** 

### Introduction to InfoSphere Master Data Management

This course is designed to teach students the basics of Master Data Management and IBM InfoSphere solutions. Students will gain an understanding of what Master Data Management is and IBM's InfoSphere MDM offerings: Standard, Advanced, and Collaborative Editions.

**Audience:**

- Open

**Prerequisites:**

- None

# IBM ADVANCED ANALYTICS

## AVAILABLE TRAINING FORMATS:



In-Class



Instructor-Led Online



Self-Paced Virtual Classes

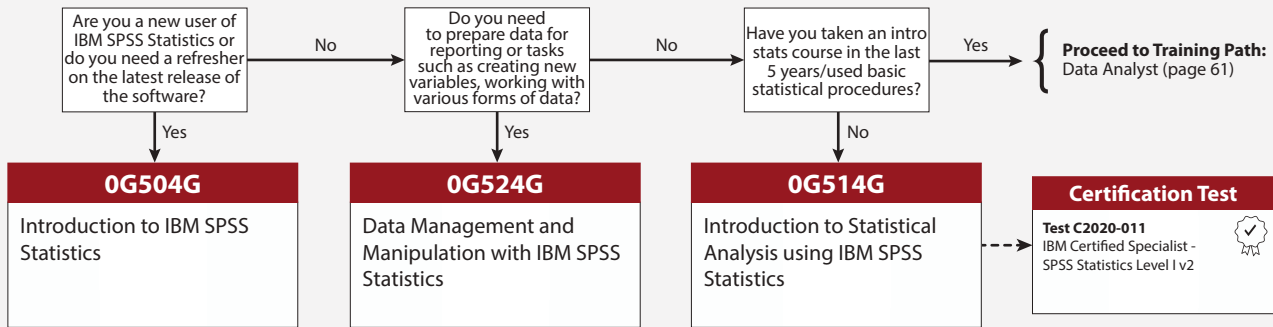


Customized

# IBM SPSS STATISTICS

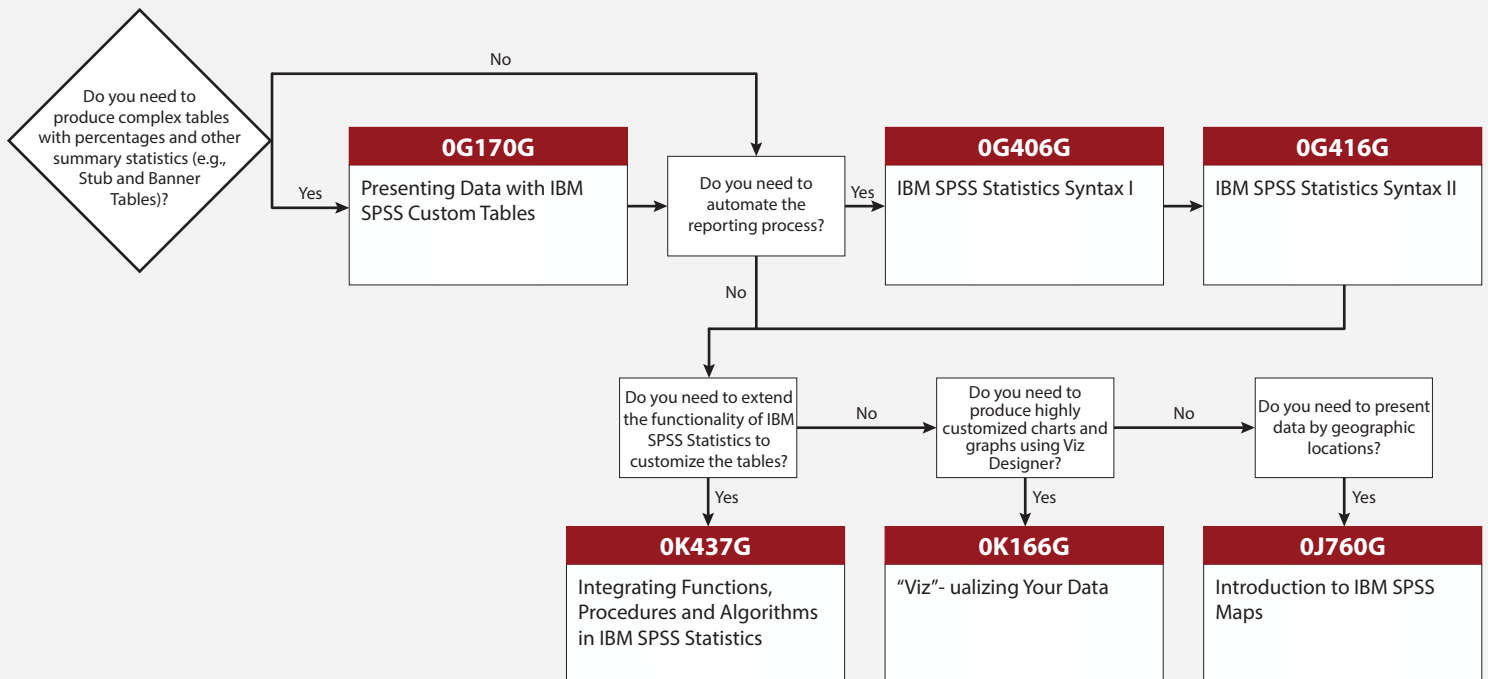
## NEW USER

Learn IBM SPSS Statistics: As a new user, use this journey to learn how to prepare data and use various statistical analysis methods.



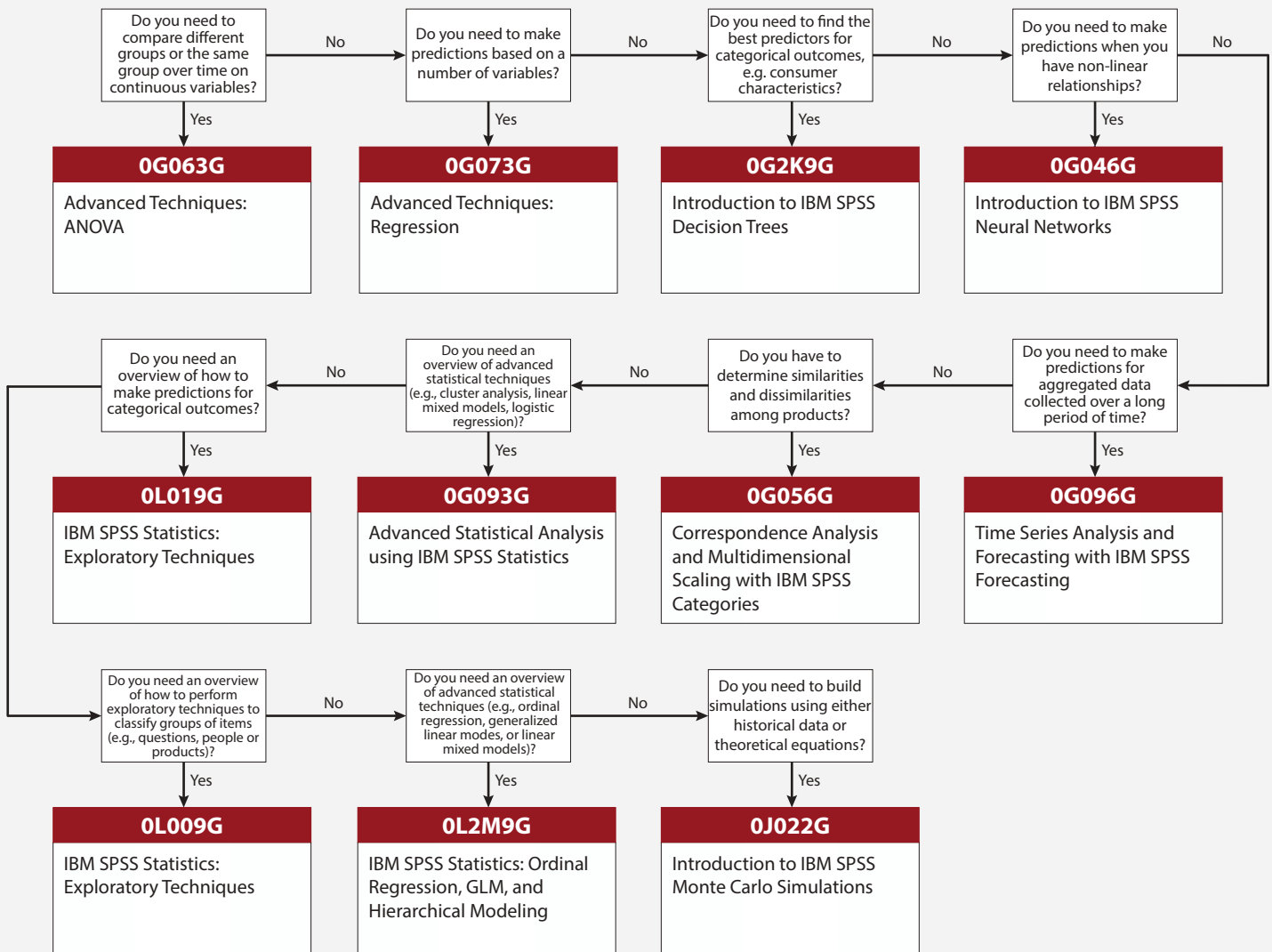
## REPORTING

Create Custom Reports: As a report writer, you are responsible for presenting data in complex tables, graphs and other visualizations. Use this journey to expand your knowledge of SPSS Statistics and to automate the reporting process.



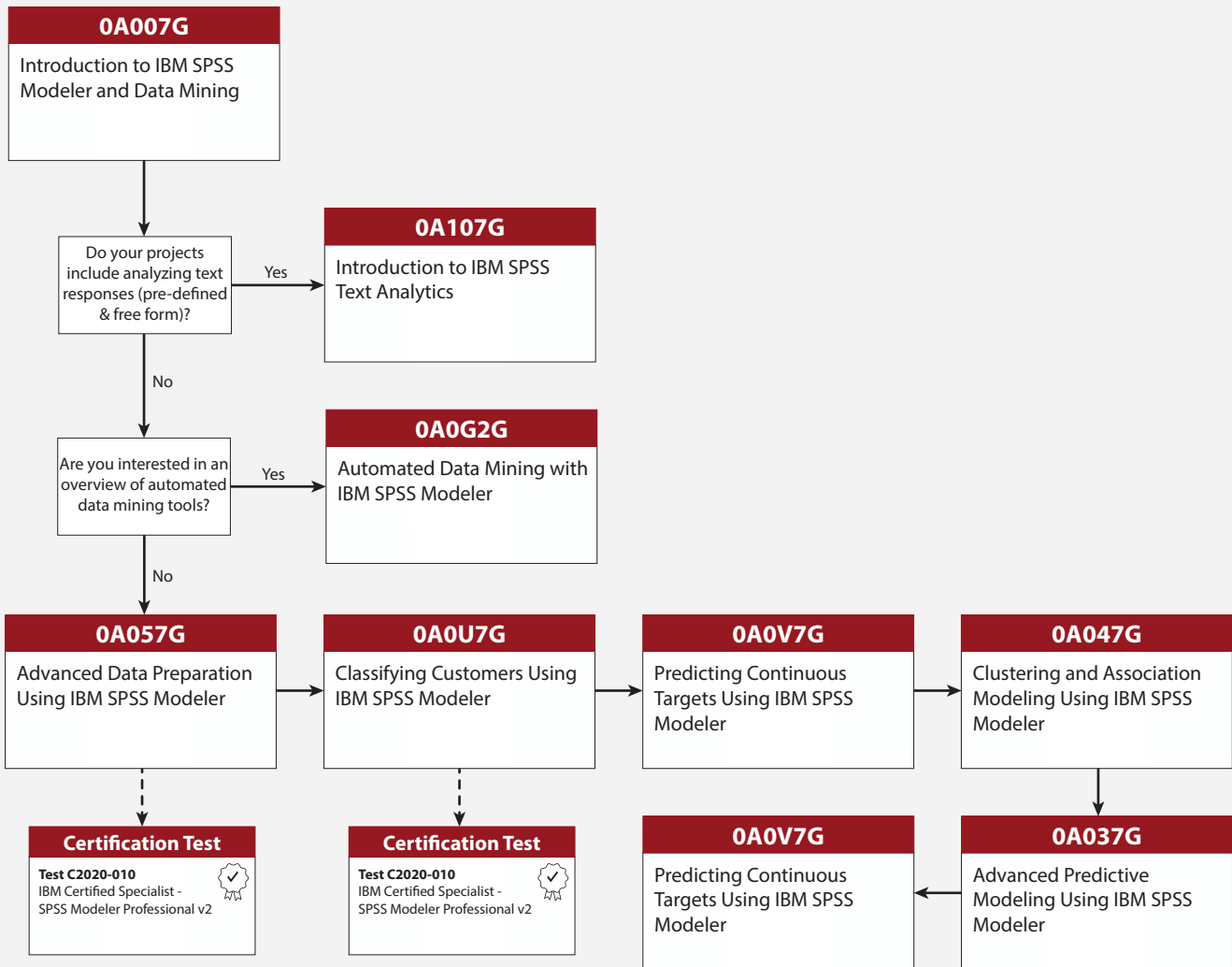
# IBM SPSS STATISTICS DATA ANALYST

Analyze Data: As an analyst, you are responsible for using multiple techniques for analyzing and categorizing data. Use this journey to learn IBM SPSS Statistics's advanced techniques such as ANOVA, regression, decision trees, neural networking, forecasting and more.



# IBM SPSS MODELER ANALYST

Analyze Data: As a data analyst, you are responsible for using various techniques for analyzing and mining data. Use this journey to learn advanced techniques for IBM SPSS Modeler such as text analytics, data mining, classifications, predicting continuous targets, clustering, association modeling and more.



Recommended Training Paths

**0A007G**   

**Introduction to IBM SPSS Modeler and Data Mining**

This course provides an overview of data mining (using CRISP-DM) and the fundamentals of using IBM SPSS Modeler. The course outlines the typical stages of a data mining project, from collecting data, to data exploration, data transformation, and modeling to effective interpretation of the results. Students will learn the basics of how to read, prepare, and explore data with IBM SPSS Modeler, and will be introduced to modeling.

**Audience:**

- New users of IBM SPSS Modeler

**Prerequisites:**

- None

**Upcoming Sessions**

- Jan, 30-31, 2017- Markham
- Jan, 30-31, 2017- Ottawa
- Mar, 6-7, 2017- Markham
- Mar, 6-7, 2017- Vancouver
- May, 8-9, 2017- Markham/Online
- May, 8-9, 2017- Winnipeg

**0A037G**   

**Advanced Predictive Modeling Using IBM SPSS Modeler**

This course builds on advanced techniques to predict categorical and continuous targets. It addresses data preparation issues such as partitioning and detecting anomalies along with methods to reduce the number of fields to a number of core fields (factors). This course also covers advanced predictive models, such as Decision List, Support Vector Machines and Bayes Net. Methods to combine individual models into a single model in order to improve predictive power are also covered.

**Audience:**

- IBM SPSS Modelers responsible for building predictive models

**Prerequisites:**

- 0A007G - Introduction to IBM SPSS Modeler and Data Mining (page 63), or equivalent experience in analyzing data with IBM SPSS Modeler

**Upcoming Sessions**

- Feb, 6, 2017- Markham/Online
- Feb, 6, 2017- Ottawa
- Mar, 13, 2017- Markham/Online
- Mar, 13, 2017- Vancouver
- May, 15, 2017- Markham/Online
- May, 15, 2017- Winnipeg

**0A047G**   

**Clustering and Association Modeling Using IBM SPSS Modeler**

This course introduces modelers to two specific classes of modeling available in IBM SPSS Modeler: clustering and associations. Students will explore various clustering techniques typically employed in market segmentation studies, as well as how to create sequence and association models.

**Audience:**

- Modelers and analysts

**Prerequisites:**

- Familiarity with the IBM SPSS Modeler environment
- Familiarity with handling missing data (i.e. Type and Data Audit nodes), and basic data manipulation (i.e. Derive and Select nodes)
- 0A007G - Introduction to IBM SPSS Modeler and Data Mining (page 63), or equivalent experience in analyzing data with IBM SPSS Modeler

**Upcoming Sessions**

- Feb, 7, 2017- Markham/Online
- Feb, 7, 2017- Ottawa
- Mar, 14, 2017- Vancouver/Online
- Mar, 29, 2017- Markham/Online
- Mar, 29, 2017- Ottawa
- May, 16, 2017- Markham/Online



## 0A057G

### Advanced Data Preparation Using IBM SPSS Modeler

This course covers advanced topics to aid in the preparation of data for a successful data mining project. Students will learn how to use functions, deal with missing values, use advanced field operations, handle sequence data, apply advanced sampling methods, and improve efficiency.

**Audience:**

- Users looking to familiarize with the full range of techniques available in IBM SPSS Modeler for data manipulation

**Prerequisites:**

- Familiarity with the Modeler environment
- 0A007G - Introduction to IBM SPSS Modeler and Data Mining (page 63) or equivalent experience (*recommended*)

#### Upcoming Sessions

Feb, 1, 2017- Markham/Online

Feb, 1, 2017- Ottawa

Mar, 8, 2017- Markham

Mar, 8, 2017- Vancouver

May, 10, 2017- Markham/Online

May, 10, 2017- Winnipeg

## 0A0G2G

### Automated Data Mining with IBM SPSS Modeler

Students will learn how to use IBM SPSS Modeler to automate the building of predictive models. Students will build predictive models for customer behavior and customer segmentation using various cluster models. Students will also learn how to read data from various sources and automatically prepare data for modeling using a variety of methods. Scoring new data using the model will also be discussed.

**Audience:**

- New users

**Prerequisites:**

- None

#### Upcoming Sessions

Feb, 3, 2017- Vancouver

Mar, 30, 2017- Markham/Online

Mar, 30, 2017- Ottawa

Apr, 24, 2017- Online

May, 15, 2017- Winnipeg/Online

May, 15, 2017- Ottawa

## 0A0U7G

### Predictive Modeling for Categorical Targets Using IBM SPSS Modeler

This course (formerly Classifying Customers Using IBM SPSS Modeler) focuses on analytical models to predict a categorical field (churn, fraud, response to a mailing, pass/fail exams, machine break-down, and so forth). Students will be introduced to decision trees such as CHAID and C&R Tree, traditional statistical models such as Logistic Regression, and machine learning models such as Neural Networks.

**Audience:**

- Users looking to familiarize with analytical models to predict a categorical field

**Prerequisites:**

- Familiarity with IBM SPSS Modeler environment
- 0A007G - Introduction to IBM SPSS Modeler and Data Mining (page 63) or equivalent experience (*recommended*)

#### Upcoming Sessions

Feb, 2, 2017- Markham/Online

Feb, 2, 2017- Ottawa

Mar, 9, 2017- Markham/Online

Mar, 9, 2017- Vancouver

May, 11, 2017- Markham/Online

May, 11, 2017- Winnipeg

0A0V7G   

## Predictive Modeling for Continuous Targets Using IBM SPSS Modeler

This course (formerly Predicting Continuous Targets Using IBM SPSS Modeler) provides an overview of how to use IBM SPSS Modeler to predict a target field that describes numeric values. Students will be exposed to rule induction models such as CHAID and C&R Tree. Traditional statistical models such as Linear Regression will be introduced, and Machine Learning models will also be presented.

**Audience:**

- IBM SPSS Modeler analysts interested in learning modeling techniques used to predict a continuous target

**Prerequisites:**

- Familiarity with IBM SPSS Modeler environment
- 0A007G - Introduction to IBM SPSS Modeler and Data Mining (page 63) or equivalent experience (*recommended*)

### Upcoming Sessions

Feb, 3, 2017- Markham/Online

Feb, 3, 2017- Ottawa

Mar, 10, 2017- Markham

Mar, 10, 2017- Vancouver

May, 12, 2017- Markham/Online

May, 12, 2017- Winnipeg

0A107G   

## Introduction to IBM SPSS Text Analytics

This course introduces students to the complete process of working with text data, from reading the text data to creating the final categories for additional analysis. Students will learn how to apply the model for Churn analysis, create and share resource templates and Text Analysis packages, automatically and manually create and modify categories, edit synonym, type, and exclude dictionaries, as well as how to perform Text Link Analysis and Cluster Analysis with text data.

**Audience:**

- IBM SPSS Modeler analysts responsible for building predictive models

**Prerequisites:**

- 0A007G - Introduction to IBM SPSS Modeler and Data Mining (page 63) or equivalent experience (*recommended*)

### Upcoming Sessions

Feb, 9-10, 2017- Markham/Online

Feb, 9-10, 2017- Vancouver

Apr, 3-4, 2017- Markham/Online

Apr, 3-4, 2017- Ottawa

May, 16-17, 2017- Markham

May, 16-17, 2017- Winnipeg

0G046G   

## Introduction to IBM SPSS Neural Networks

This course covers the usage and application of Neural Network models using IBM SPSS Statistics. Neural Network models are used to predict an outcome variable that is either categorical or interval in scale using predictors that are also categorical or interval.

**Audience:**

- IBM Statistics users interested in Neural Network models

**Prerequisites:**

- 0G504G - Introduction to IBM SPSS Statistics (page 69) or equivalent experience
- 0G524G - Data Management and Manipulation with IBM SPSS Statistics (page 69) or equivalent experience
- 0G093G - Advanced Statistical Analysis using IBM SPSS Statistics (page 67) or equivalent experience

### Upcoming Sessions

Feb, 27, 2017- Winnipeg/Online

Mar, 30, 2017- Markham/Online

Apr, 17, 2017- Vancouver

Apr, 17, 2017- Online

May, 29, 2017- Ottawa

Jun, 19, 2017- Markham/Online

**0G056G**

## Correspondence Analysis and Multidimensional Scaling with IBM SPSS Categories

This course teaches students how to perform Correspondence Analysis and Multidimensional Scaling using procedures in the IBM SPSS Categories add-on module. Students will learn about useful analysis techniques such as Correspondence Analysis, Multidimensional Scaling, and Preference Scaling – and their applications.

**Audience:**

- IBM SPSS Statistics users interested in Correspondence Analysis and Multidimensional Scaling

**Prerequisites:**

- 0G504G - Introduction to IBM SPSS Statistics (page 69) or equivalent experience
- Basic statistical knowledge would be helpful

### Upcoming Sessions

Feb, 17, 2017- Ottawa/Online

Mar, 6, 2017- Markham/Online

Mar, 6, 2017- Vancouver

Apr, 14, 2017- Online

Jun, 5, 2017- Markham/Online

Jun, 12-13, 2017- Calgary

**0G063G**

## Advanced Techniques ANOVA

This course covers different Analysis of Variance techniques, which allows students to test whether the means of several populations are the same. After discussing the basic assumptions for each technique students will check the assumptions, run the analysis and draw conclusions from the data.

**Audience:**

- IBM SPSS Statistics users looking to refresh their knowledge of variance analysis techniques

**Prerequisites:**

- Experience with SPSS Syntax

### Upcoming Sessions

Feb, 9-10, 2017- Ottawa/Online

Mar, 7-8, 2017- Markham/Online

Mar, 7-8, 2017- Calgary

Apr, 27-28, 2017- Vancouver/Online

May, 18-19, 2017- Online

Jun, 6-7, 2017- Markham/Online

**0G073G**

## Advanced Techniques Regression

This course examines regression techniques used to explore the relationships between interval scale variables in detail. Students will develop an understanding of when to apply each technique, how to apply it, and how to interpret the results. Additionally, the course will cover some preliminary data analysis steps and suggestions on how to proceed when your assumptions fail.

**Audience:**

- IBM SPSS Modeler users
- For users of SPSS for Windows Based System, SPSS Regression Models and SPSS Advanced Models

**Prerequisites:**

- Interest in knowing when to use and how to set up regression in IBM SPSS Modeler and how to interpret results
- Experience with SPSS for Windows Base System, SPSS Regression Models and SPSS Advanced Models

### Upcoming Sessions

Feb, 20-22, 2017- Markham/Online

Mar, 29-31, 2017- Ottawa/Online

May, 15-17, 2017- Markham/Online

May, 15-17, 2017- Calgary

May, 29-31, 2017- Vancouver

Jun, 26-28, 2017- Ottawa/Online

**OG093G**   

## Advanced Statistical Analysis Using IBM SPSS Statistics

This course introduces students to the advanced statistical methods available in IBM SPSS Statistics, including specific use cases, their underlying assumptions, analysis setup, as well as results analysis. This includes a broad range of techniques for predicting both continuous and categorical outcomes, as well as methods to cluster cases, find similar cases using a large set of variables and how to create statistical groupings of variables.

**Audience:**

- Analysts and modelers

**Prerequisites:**

- OG514G - Introduction to Statistical Analysis Using IBM SPSS Statistics (page 69) or equivalent experience
- Knowledge of basic statistics would be helpful

Upcoming Sessions	
Feb, 1-2, 2017-	Online
Mar, 13-14, 2017-	Markham/Online
Apr, 10-11, 2017-	Vancouver
May, 8-9, 2017-	Ottawa/Online
May, 8-9, 2017-	Winnipeg
Jun, 12-13, 2017-	Markham/Online

**OG096G**   

## Time Series Analysis and Forecasting with IBM SPSS Forecasting

This course outlines the process for analyzing time series data, including how to forecast using a variety of models, accounting for various combinations of trend, seasonality and predictive variables. Additionally, students will learn how to generate predictive values along with standard errors, confidence intervals and residuals. This course will emphasize the graphical display of your results, and will cover the new Expert Modeler features in SPSS Trends.

**Audience:**

- SPSS users interested learning about SPSS forecasting capabilities

**Prerequisites:**

- Experience with SPSS on Windows or completion of the Basics and/or Intermediate SPSS for Windows courses
- No previous forecasting experience required, but basic regression knowledge would be helpful

Upcoming Sessions	
Jan 30- Feb 1, 2017-	Markham/Online
Jan 30- Feb 1, 2017-	Vancouver
Mar, 13-14, 2017-	Winnipeg/Online
Apr, 3-5, 2017-	Ottawa/Online
May, 1-3, 2017-	Online
Jun, 19-21, 2017-	Markham/Online

**OG170G**   

## Presenting Data with IBM SPSS Custom Tables

This course covers how to create and edit tables using the IBM SPSS Custom Tables Module. Students will learn how to create tables by performing cross-tabulations, stacking, layering and nesting variables within tables, as well as creating tables for variables with shared categories and multiple response sets. Finally, students will learn how to edit tables using techniques both within and outside of the IBM SPSS Custom Tables Module.

**Audience:**

- IBM SPSS Statistics users

**Prerequisites:**

- OG504G - Introduction to IBM SPSS Statistics (page 69) or equivalent experience

Upcoming Sessions	
Feb, 2-3, 2017-	Markham/Online
Feb, 2-3, 2017-	Ottawa
Mar, 13-14, 2017-	Online
Apr, 6-7, 2017-	Vancouver
Apr, 6-7, 2017-	Ottawa/Online
Jun, 22-23, 2017-	Markham/Online

## 0G2K9G

### Introduction to IBM SPSS Decision Trees

This course provides a general introduction to the features of the IBM SPSS Decision Trees module, and an overview of decision tree based methods. These methods (CHAID, Exhaustive CHAID, CRT, and QUEST) are used to perform classification, segmentation, and predictive modeling in a wide range of business and research areas. The techniques are discussed and compared, the data is analyzed, and the results are interpreted.

**Audience:**

- Data analysts and market researchers

**Prerequisites:**

- Advanced statistical training in predictive models and basic regression (*recommended*)

#### Upcoming Sessions

- Feb, 6-7, 2017- Markham/Online
- Mar, 20-21, 2017- Vancouver/Online
- Apr, 10-11, 2017- Ottawa/Online
- May, 25-27, 2017- Calgary
- May, 25- 27, 2017- Online
- Jun, 26-27, 2017- Markham/Online

## 0G406G

### IBM SPSS Statistics Syntax I

This course introduces the rules of syntax, the command language that gives instructions to SPSS Statistics. Students will learn how to generate syntax from the dialog boxes, modify, and optimize its use. In this course, dialog boxes and syntax are complementary.

**Audience:**

- IBM SPSS Statistics users performing repetitive production tasks, or who are responsible for maintaining SPSS syntax jobs

**Prerequisites:**

- 0G504G - Introduction to SPSS Statistics (page 69) or equivalent experience

#### Upcoming Sessions

- Feb, 15, 2017- Markham/Online
- Feb, 15, 2017- Vancouver
- Apr, 10, 2017- Markham/Online
- Apr, 10, 2017- Ottawa
- May, 29, 2017- Markham/Online
- Jun, 14, 2017- Online

## 0G416G

### IBM SPSS Statistics Syntax II

This course focuses on powerful data transformations (only available in syntax - not in the GUI) and on automation (Macros and the Production Facility). The Macro language is discussed in detail with the purpose of optimizing syntax efficiency and transparency; and the Production Facility is discussed to highlight how syntax files can be scheduled in Windows and other OS environments.

**Audience:**

- Experienced IBM SPSS Statistics users

**Prerequisites:**

- 0G406G - IBM SPSS Statistics Syntax I (page 68) or equivalent experience

#### Upcoming Sessions

- Feb, 16-17, 2017- Markham/Online
- Feb, 16-17, 2017- Vancouver
- Apr, 11-12, 2017- Ottawa
- Apr, 11-12, 2017- Markham/Online
- May, 30-31, 2017 Markham/Online
- Jun, 15-16, 2017- Online

**0G504G**   

**Introduction to IBM SPSS Statistics**

This course teaches students the fundamentals of using IBM SPSS Statistics for typical data analysis processes. Students will learn the basics of reading data, data definition, data modification, data analysis, and the presentation of analytical results, as well as the shortcuts to help save time. This course uses the IBM SPSS Statistics Base features.

**Audience:**

- Beginner SPSS Statistics users
- Those considering purchasing IBM SPSS Statistics

**Prerequisites:**

- Experience using applications, such as word processors or spreadsheets, on Microsoft Windows, Macintosh or Linux environments
- Basic understanding of the purpose and functions of the software (*recommended*)

Upcoming Sessions	
Feb, 21-22, 2017-	Markham/Online
Feb, 21-22, 2017-	Ottawa
Mar, 20-21, 2017-	Markham/Online
Apr, 24-25, 2017-	Vancouver
Apr, 24-25, 2017-	Ottawa/Online
Jun, 5-6, 2017-	Markham/Online

**0G514G**   

**Introduction to Statistical Analysis using IBM SPSS Statistics**

This course introduces students to the statistical component of IBM SPSS Statistics. Statistical techniques will be reviewed and discussed, such as how to explore and summarize data, and how to investigate and test underlying relationships. Students will gain an understanding of when and why to use these various techniques, as well as how to apply them with confidence, interpret their output, and graphically display the results.

**Audience:**

- IBM SPSS Statistics users

**Prerequisites:**

- 0G504G - Introduction to IBM SPSS Statistics (page 69) or 0G524G - Data Management and Manipulation with IBM SPSS Statistics (page 69) or equivalent experience with IBM SPSS Statistics

Upcoming Sessions	
Feb, 23-24, 2017-	Markham/Online
Feb, 23-24, 2017-	Ottawa
Mar, 22- 23, 2017-	Markham/Online
Apr, 26-27, 2017-	Ottawa/Online
Apr, 26-27, 2017-	Vancouver
Jun, 7-8, 2017-	Markham/Online

**0G524G**   

**Data Management and Manipulation with IBM SPSS Statistics**

This course focuses on a wide range of data transformation techniques, such as ways to automate data preparation work, manipulate data files and analytical results. Students will gain an understanding of the various options for controlling the IBM SPSS Statistics operating environment and how to perform data transformations efficiently.

**Audience:**

- IBM SPSS Statistics users

**Prerequisites:**

- 0G504G - Introduction to IBM SPSS Statistics (page 69) or equivalent experience

Upcoming Sessions	
Feb, 27-28, 2017-	Online
Mar, 27-28, 2017-	Markham/Online
Mar, 27-28, 2017-	Ottawa
Apr, 5-6, 2017-	Markham/Online
Apr, 5-6, 2017-	Vancouver
May 31- Jun 1, 2017-	Markham/Online

## OL009G

### IBM SPSS Statistics: Exploratory Data Analysis

This course introduces students to the advanced statistical methods available in IBM SPSS Statistics, including a discussion of specific use cases, their underlying assumptions, analysis setup, as well as results interpretation. Students will learn techniques to predict both categorical and continuous outcomes, cluster cases, create statistical variable groupings, and find similar cases using a large set of variables.

**Audience:**

- Analysts and modelers looking to build on current competencies

**Prerequisites:**

- 0G514G - Introduction to Statistical Analysis Using IBM SPSS Statistics (page 69) or equivalent experience
- Knowledge of basic statistics would be helpful

#### Upcoming Sessions

Feb, 14, 2017- Markham/Online

Mar, 6, 2017- Ottawa/Online

Mar, 6, 2017- Calgary

Apr, 24, 2017- Markham/Online

May, 18, 2017- Online

Jun, 6, 2017- Markham/Online

## OL019G

### IBM SPSS Statistics: Advanced Topics in Regression and Discriminant Analysis

Students will learn advanced statistical methods available in IBM SPSS Statistics, including a discussion of specific use cases, their underlying assumptions, analysis setup, as well as results interpretation.

**Audience:**

- Analysts and modelers looking to build on current competencies

**Prerequisites:**

- 0G514G - Introduction to Statistical Analysis Using IBM SPSS Statistics (page 69) or equivalent experience
- Knowledge of basic statistics would be helpful

#### Upcoming Sessions

Feb, 15, 2017- Markham/Online

Mar, 7, 2017- Ottawa/Online

Mar, 7, 2017- Calgary

Apr, 25, 2017- Markham/Online

May, 19, 2017- Online

Jun, 7, 2017- Markham/Online

## OL2M9G

### IBM SPSS Statistics: Ordinal Regression, GLM and Hierarchical Modeling

Students will learn advanced statistical methods available in IBM SPSS Statistics, including a discussion of specific use cases, their underlying assumptions, analysis setup, as well as results interpretation.

**Audience:**

- Analysts and modelers looking to build on current competencies

**Prerequisites:**

- 0G514G - Introduction to Statistical Analysis Using IBM SPSS Statistics (page 69) or equivalent experience
- Knowledge of basic statistics would be helpful

#### Upcoming Sessions

Feb, 13, 2017- Markham/Online

Feb, 13, 2017- Vancouver

Apr, 24, 2017- Markham/Online

Mar, 20, 2017- Winnipeg/Online

May, 29, 2017- Ottawa/Online

Jun, 19, 2017- Online

## SELF-PACED VIRTUAL CLASSES

**OJ022G** 

### Introduction to IBM SPSS Monte Carlo Simulation

This course covers how to create, edit, and run simulations using the IBM SPSS Statistics Simulations procedure. Students will learn about Monte Carlo simulations, how they work and some of their advantages over single-point estimate models. Students will also learn to use the simulation builder, from either historical data or theoretical equations, and how to use the run simulation dialog.

**Audience:**

- Data analysts

**Prerequisites:**

- Familiarity with Windows OS, Microsoft Excel, and a web browser
  - 0G514G - Introduction to Statistical Analysis Using IBM SPSS Statistics (page 69) or equivalent experience
- 

**OJ760G** 

### Introduction to IBM SPSS Maps

This course covers how to create and edit maps using the IBM SPSS Statistics Graphboard Template Chooser. Students will learn how to take data with a geographical component and create different types of maps that allow one to see patterns in the data that might not be evident in traditional charts. They will also learn how to use the Map Conversion Utility to create additional map template files.

**Audience:**

- Students familiar with IBM SPSS Statistics

**Prerequisites:**

- 0G504G - Introduction to IBM SPSS Statistics (page 69) or equivalent experience
  - Familiarity with Windows OS, and a web browser
- 

**0K166G** 

### “Viz”-ualizing Your Data - On Demand Recording

This course introduces the new Viz Designer application, exploring the life cycle of a data visualization from creation to deployment. Those new to visualization technology will be aided by the template chooser, experienced visualization users are able to create custom templates which can be deployed into other SPSS client applications including SPSS Statistics 17.0 and Clementine 12.x. This course will cover techniques for both the “Viz” consumer and the organization’s data experts.

**Audience:**

- Open

**Prerequisites:**

- None
- 

**0K437G** 

### Integrating Functions, Procedures and Algorithms with IBM SPSS Statistics

This course covers how to integrate custom programming functions with IBM SPSS Statistics. Students will learn the concepts and benefits of programmability, and how to locate information and install existing extension commands. Students will also learn how to create custom dialog boxes, syntax definitions for extension commands, and extension commands in Python or R.

**Audience:**

- Experienced users wishing to extend the functionality of the IBM SPSS Statistics software

**Prerequisites:**

- 0G406G - IBM SPSS Statistics Syntax I (page 68) or equivalent experience (*recommended*)
  - 0G524G - Data Management and Manipulation with IBM SPSS Statistics (page 69) or equivalent experience (*recommended*)
-



# IBM OPEN SOURCE & BIG DATA ANALYTICS

## AVAILABLE TRAINING FORMATS:



In-Class



Instructor-Led Online



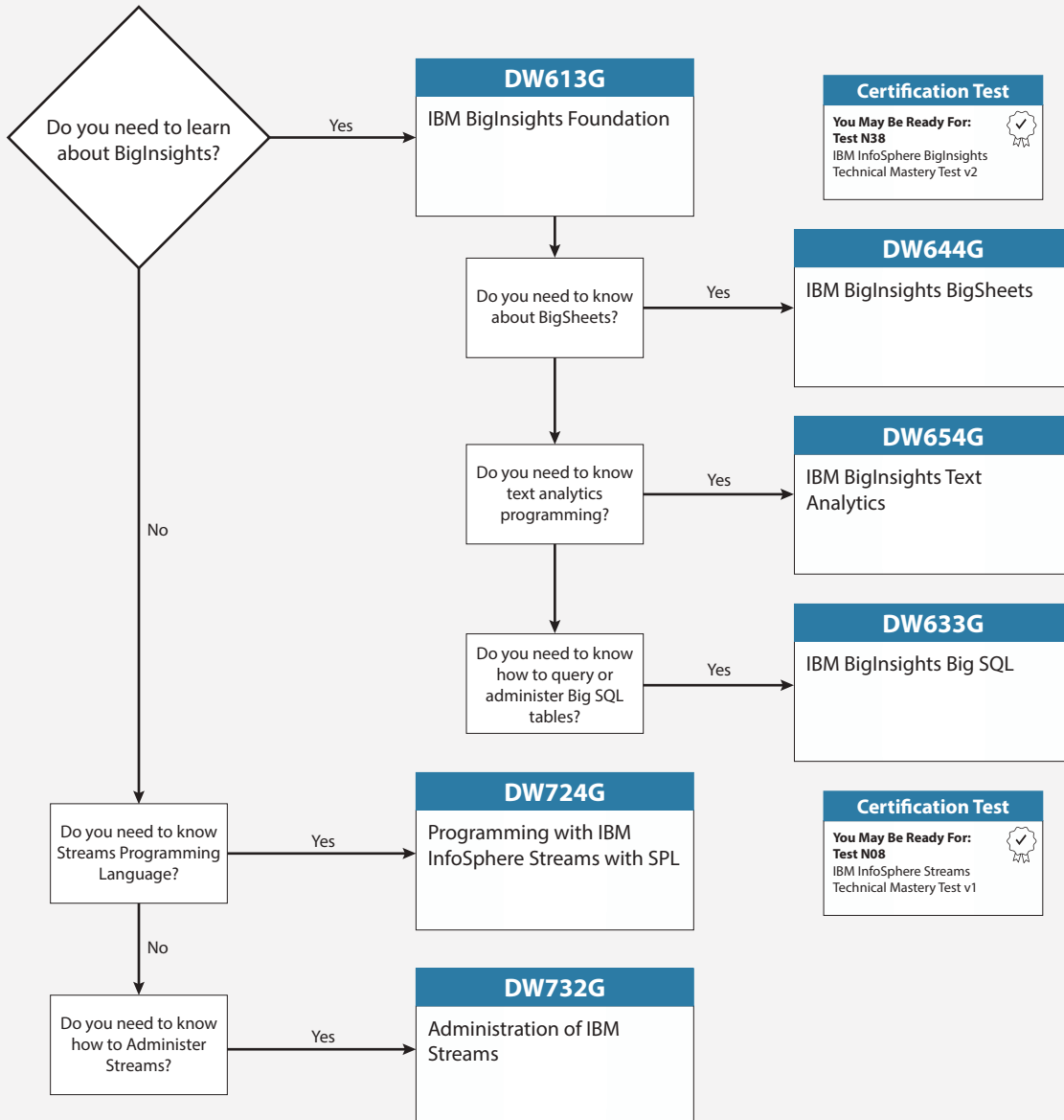
Self-Paced Virtual Classes



Customized

# INFOSPHERE STREAMS & BIGINSIGHTS

Start your IBM Big Data journey with these new training options.



## DW601G

### IBM BigInsights Overview

This course provides an overview of IBM's big data strategy as well as the importance of understanding and using big data. The course will cover IBM BigInsights as a platform for managing and gaining insights from big data. Students will learn how the BigInsights have aligned their offerings to better suit their needs with the IBM Open Platform (IOP) along with the three specialized modules with value-add that sits on top of the IOP.

**Audience:**

- Big data engineers, data scientists, developers, programmers, and administrators

**Prerequisites:**

- Knowledge of Linux would be helpful

#### Upcoming Sessions

Feb, 1, 2017- Markham/Online

Mar, 27, 2017- Ottawa/Online

Mar, 27, 2017- Vancouver

Apr, 17, 2017- Online

May, 23, 2017- Markham/Online

May, 23, 2017- Winnipeg

## DW606G

### IBM Open Platform with Apache Hadoop

This course provides an in-depth introduction to the main components of the ODP core - namely Apache Hadoop (inclusive of HDFS, YARN, and MapReduce) and Apache Ambari - as well as providing a treatment of the main open-source components that are generally made available with the ODP core in a production Hadoop cluster.

**Audience:**

- Big data engineers, data scientist, developers, programmers, and administrators

**Prerequisites:**

- Knowledge of Linux would be helpful

#### Upcoming Sessions

Feb, 2-3, 2017- Markham/Online

Mar, 28-29, 2017- Ottawa/Online

Mar, 8-29, 2017- Vancouver

Apr, 18-19, 2017- Online

May, 24-25, 2017- Markham/Online

May, 24-25, 2017- Winnipeg

## DW613G

### IBM BigInsights Foundation

This course provides a foundation of IBM BigInsights through two separate modules: IBM BigInsights Overview and IBM Open Platform with Apache Hadoop. The first module will cover IBM BigInsights as a platform for managing and gaining insights from your big data, as well as value-add tools including Big SQL, BigSheets, and Big R. The second module will provide students with an in-depth introduction to the main components of the ODP core - namely Apache Hadoop (inclusive of HDFS, YARN, and MapReduce) and Apache Ambari.

**Audience:**

- Big data engineers, data scientists, developers, programmers, and administrators

**Prerequisites:**

- None

#### Upcoming Sessions

Feb, 1-3, 2017- Markham/Online

Mar, 27-29, 2017- Ottawa/Online

Mar, 27-29, 2017- Vancouver

Apr, 17-19, 2017- Online

May, 23-25, 2017- Markham/Online

May, 23-25, 2017- Winnipeg

## DW633G

### IBM BigInsights Big SQL

This course introduces students to the capabilities of Big SQL, a part of IBM BigInsights that allows students to access their HDFS data by providing a logical view. Students can use the same SQL that was developed for their data warehouse data on your HDFS data. This course will also cover Big SQL federation, allowing students to join various data sources with Big SQL, as well as integration with a number of other components including Spark, HBase and BigSheets.

**Audience:**

- Developers and administrators that want to use Big SQL to access and administer their Hadoop data

**Prerequisites:**

- Familiarity with SQL, Hadoop, and the Linux file system

Upcoming Sessions
Feb, 8, 2017- Markham/Online
Apr, 3, 2017- Ottawa/Online
Apr, 3, 2017- Vancouver
Apr, 24, 2017- Online
May, 30, 2017- Markham/Online
May, 30, 2017- Winnipeg

## DW644G

### IBM BigInsights BigSheets

This course introduces students to the capabilities of BigSheets, a component of IBM BigInsights through the Analyst and the Data Scientist module. It provides the analyst the ability to visualize and analyze data stored on the HDFS using a spreadsheet type interface without any programming.

**Audience:**

- Business analysts

**Prerequisites:**

- Familiarity with Hadoop and the Linux file system
- DW601G - IBM BigInsights Overview (page 74) *(recommended)*

Upcoming Sessions
Feb, 6, 2017- Markham/Online
Mar, 30, 2017- Ottawa/Online
Mar, 30, 2017- Vancouver
Apr, 20, 2017- Online
May, 16, 2017- Markham/Online
May, 26, 2017- Winnipeg

## DW653G

### BigInsights Analytics for Programmers

This course is designed to aid programmers who are working with IBM's InfoSphere BigInsights. Students will learn how to create annotators through the use of IBM's Annotation Query Language (AQL) and how to use Jaql to create high level programs that are decomposed into Hadoop MapReduce programs. This course covers the foundation to programming using the Apache Pig language along with how to publish a text analytics application from the BigInsights development environment to a BigInsights server.

**Audience:**

- This intermediate course is for anyone with a need to learn the IBM Annotation Query Language (AQL), Jaql or Pig

**Prerequisites:**

- Knowledge of SQL

Upcoming Sessions
Jan, 26-27, 2017- Markham/Online
Mar, 2-3, 2017- Ottawa/Online
Mar, 2-3, 2017- Winnipeg
Apr, 20-21, 2017- Vancouver/Online
May, 29-30, 2017- Markham/Online
Jun, 26-27, 2017- Online

## DW654G

### IBM BigInsights Text Analytics

This course teaches students how to use IBM BigInsights Text Analytics to extract information from unstructured and semi-structured documents. Students will learn how to use IBM BigInsights Text Analytics to create extractors using a visual web interface. The visual extractors are then automatically translated into Annotation Query Language (AQL) rules to extract structured information from unstructured and semi-structured documents. Students will also learn to apply Text Analytics to big data at rest in IBM BigInsights and big data in motion in IBM Streams.

**Audience:**

- Data scientists and developers

**Prerequisites:**

- Familiarity with SQL, Hadoop, and the Linux file system
- DW601G - IBM BigInsights Overview (page 74)
- DW644G - IBM BigInsights BigSheets (page 75) *(recommended)*

#### Upcoming Sessions

Feb, 7, 2017- Markham/Online

Mar, 31, 2017- Ottawa/Online

Mar, 31, 2017- Vancouver

Apr, 21, 2017- Online

May, 29, 2017- Markham/Online

May, 29, 2017- Winnipeg

## DW724G

### Programming for IBM InfoSphere Streams with SPL

This course is designed to teach students about the Streams Processing Language. It will cover the basic concepts of InfoSphere Streams and the basic Streams Processing Language operators used in a Streams program. Students will learn how to access data from an external source using the Source type operators and write an output stream using the Sink type operators. Students will also learn how and when to use the various Stream operators, like the Functor, Punctor, Aggregation, Sort, Join, Split, Barrier, Delay, and Switch operators.

**Audience:**

- This basic course is designed for those who are planning on developing InfoSphere Streams applications

**Prerequisites:**

- None

#### Upcoming Sessions

Feb, 13-16, 2017- Markham/Online

Apr, 4-7, 2017- Ottawa/Online

Apr, 4-7, 2017- Vancouver

May, 8-11, 2017- Online

Jun, 5-8, 2017- Markham/Online

Jun, 5-8, 2017- Winnipeg

## DW732G

### Administration of IBM Streams

This course enables students to acquire the skills necessary to administer an IBM Streams system. The course covers how to create and view Streams domains and instances, using ZooKeeper in a high availability environment, stopping and starting processing elements, viewing the jobs and processing elements that are running, and a variety of other topics.

**Audience:**

- Those who will be Administering IBM Streams

**Prerequisites:**

- Knowledge of Linux administration
- DW724G - Programming for InfoSphere Streams with SPL (page 76) *(recommended)*

#### Upcoming Sessions

Feb, 21-22, 2017- Markham/Online

Apr, 10-11, 2017- Ottawa/Online

Apr, 10-11, 2017- Vancouver

May, 15-16, 2017- Online

Jun, 12-13, 2017- Markham/Online

Jun, 12-13, 2017- Winnipeg

# FREQUENTLY ASKED QUESTIONS

## 1. What courseware do I receive after I register for a course?

**In-Class:** Upon arrival to the classroom you will receive a hard copy of the student manual, a notebook & pen, and a laptop with access to the course environment.

**Instructor-Led Online:** You will receive a copy of the student manual approximately a week prior to course start. You will also receive the login information for virtual machines and the audio-conferencing tool 1-2 business days before the course start date.

**Self-Paced Virtual Class:** You will receive access to a virtual machine through your web browser, which includes a PDF copy of the student manual. Students will have access to the SPVC for 30 days after starting the course, and can work through exercises at their own pace.

## 2. Is there a specific sequence of courses I should take?

Yes, based on your role, there is a certain recommended training path. Please see the beginning of each course section for our standard recommended training paths - we can help create a customized training path for your needs. Please contact Newcomp Analytics' training advisors at [training@newcomp.com](mailto:training@newcomp.com) or (888) 892-4276.

## 3. Why isn't the course I am looking for in the training catalogue?

We have included our most popular courses in the training catalogue. We can teach most, if not all, IBM Analytics training courses. Based on interest, we can add courses to the public schedule or schedule a private, on-site training session at your location. Please reach out to us directly at [training@newcomp.com](mailto:training@newcomp.com) to discuss options in further detail.

## 4. Why is training not scheduled in my city?

We schedule training sessions based on interest and requests from our students. Please reach out to us with your request and we can add it to our training schedule.

## 5. Does Newcomp Analytics offer customized courses?

Absolutely! Reach out to us directly at [training@newcomp.com](mailto:training@newcomp.com) to discuss the options for customization and mentoring.

All information is correct at time of printing, but subject to change.





[www.newcomp.com](http://www.newcomp.com)

**175 COMMERCE VALLEY DRIVE WEST, SUITE 230, THORNHILL, ON, L3T 7P6**

**MAIN: 888.892.4276 / FAX: 905.707.2170**